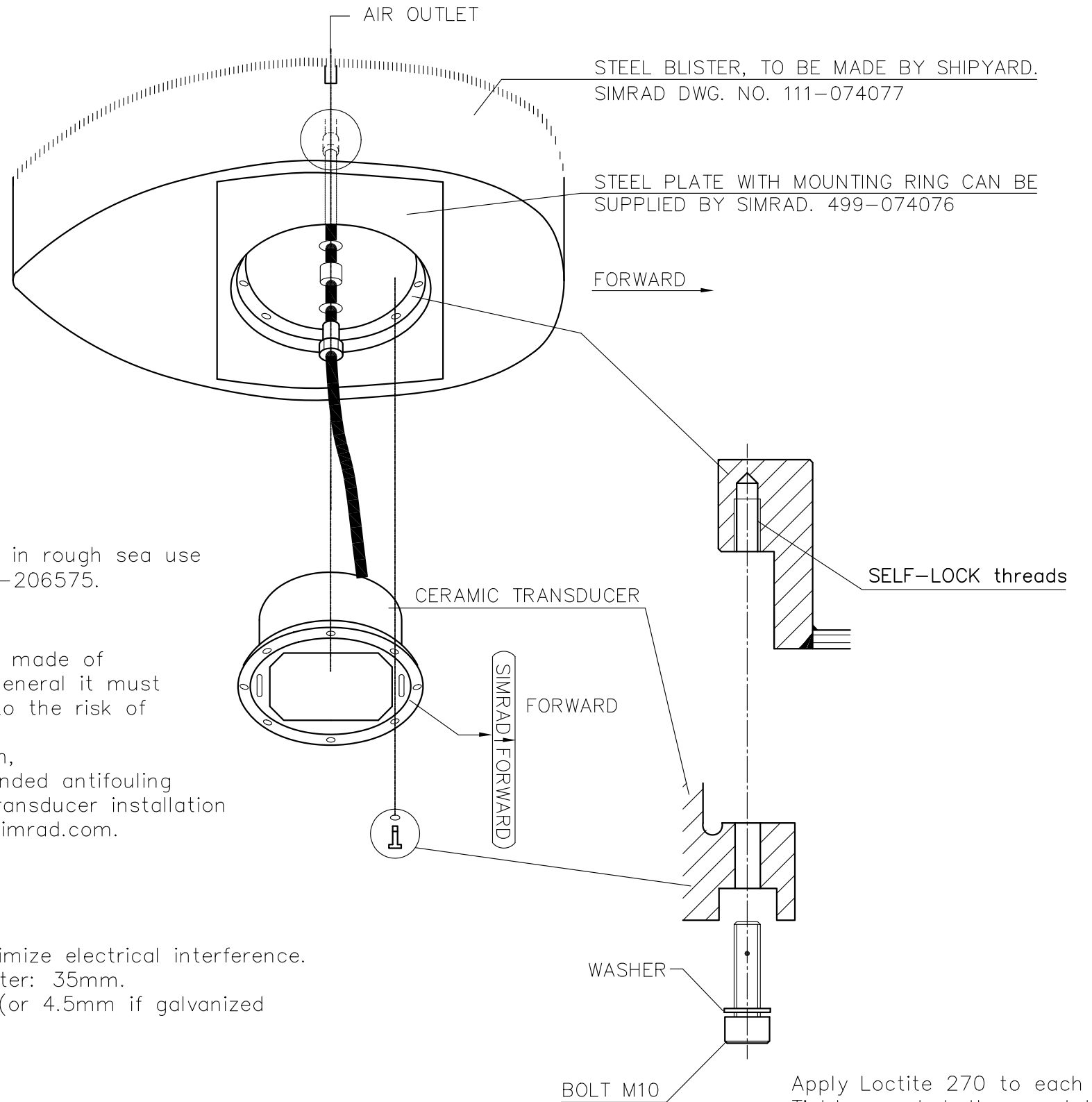
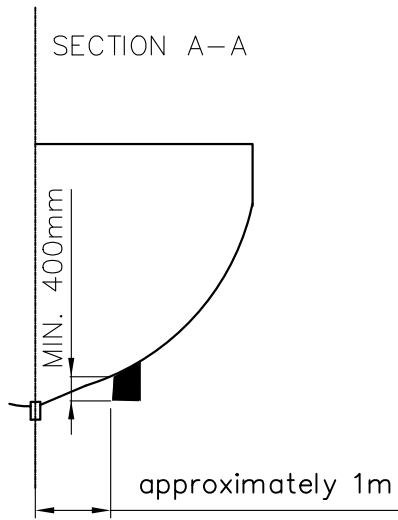
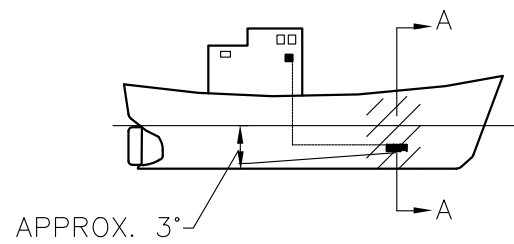


NB: DO NOT LIFT THE
TRANSDUCER BY IT'S CABLE.

RECOMMENDED LOCATION
OF TRANSDUCER



Important:

In case of 'slamming' in rough sea use supporting beam 099-206575.

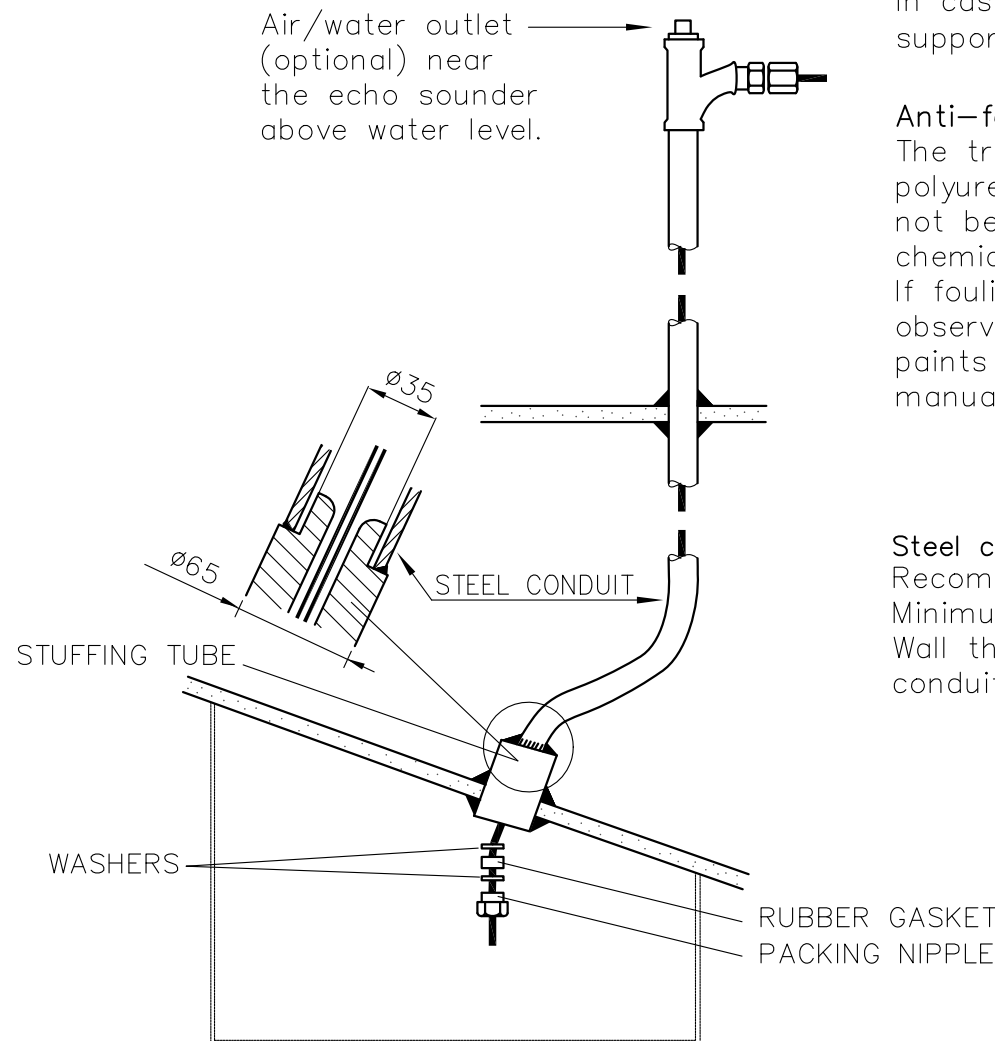
Anti-fouling paint:

The transducer face is made of polyurethane and in general it must not be painted. due to the risk of chemical reaction. If fouling is a problem, observe the recommended antifouling paints listed in the transducer installation manual and on www.simrad.com.

Steel conduit:

Recommended to minimize electrical interference. Minimum inside diameter: 35mm. Wall thickness: 6mm (or 4.5mm if galvanized conduit is used.)

Air/water outlet (optional) near the echo sounder above water level.



Apply Loctite 270 to each bolt. Tighten each bolt several times. Tightening torque 32Nm.

REV./SIGN.	B	OMJ	C	KTP	D	OMJ	E	OMJ	F	BOW			
DATE	98.06.09		00.02.29		02.04.04		02.04.17		2009.09.18				
PROJ. METHOD					UNLESS OTHERWISE STATED, TOLERANCE:			PARTS LIST:		 A KONGSBERG Company			
SCALE	-				Mounting of transducer			SHEET 1 OF 1		SH.SIZE: A3		REV.:	
DRAWN	90.08.21		E.S.		38-7 and ES 38-B			820-074544		F			
CHECKED	90.09.06		T.W.		in steel blister			FILE NO.: -					
APPROVED	90.08.21		H.B.										