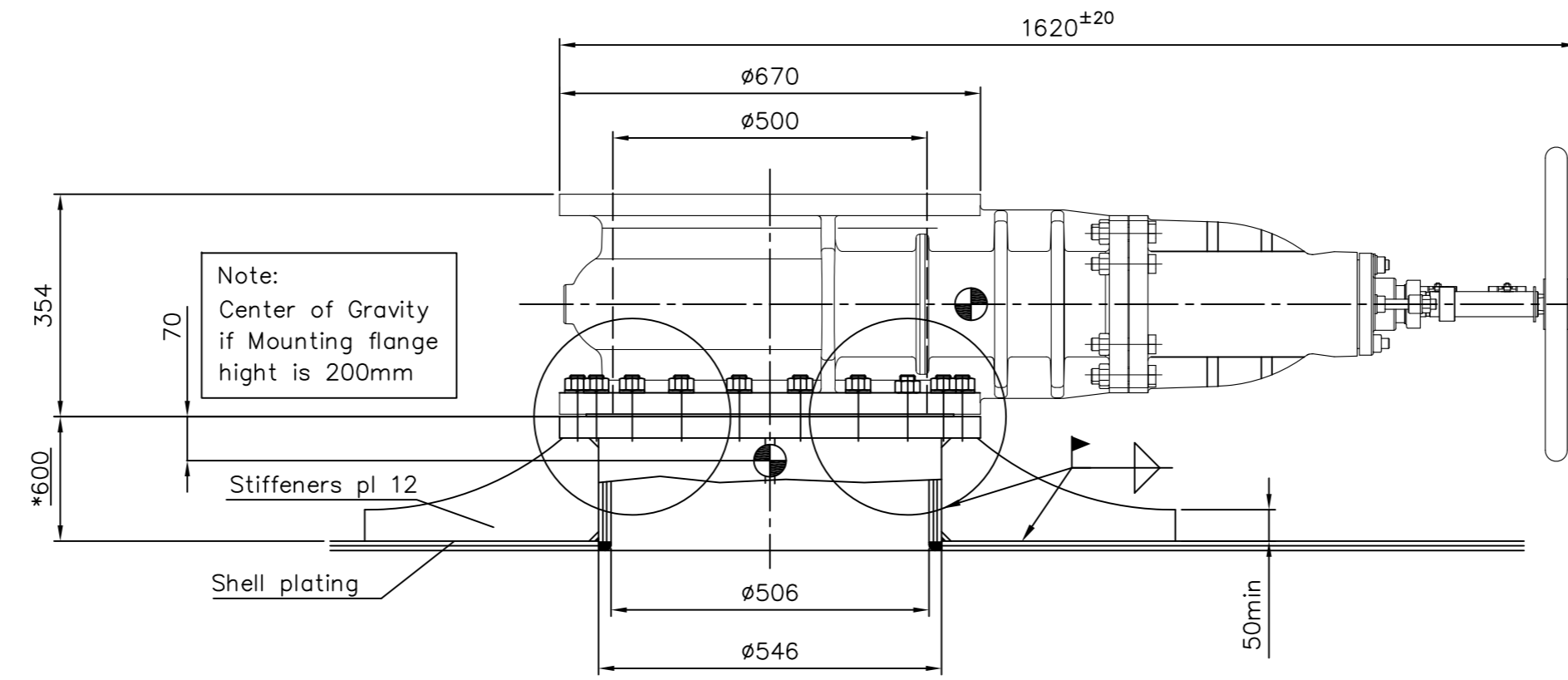
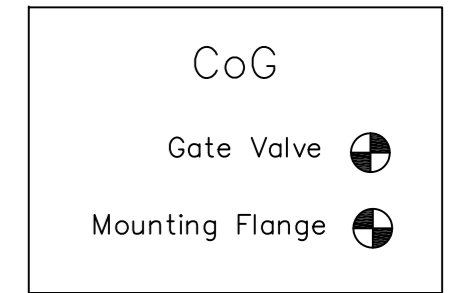
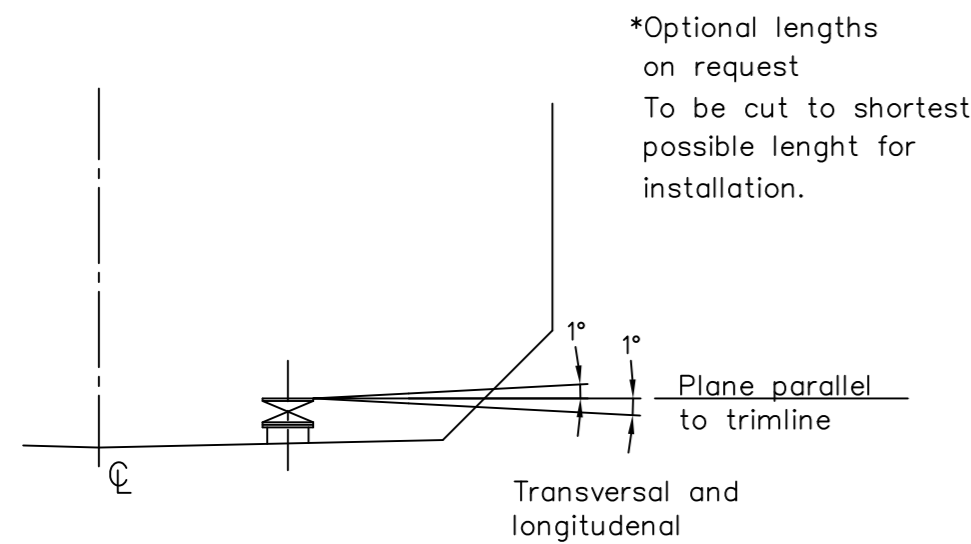
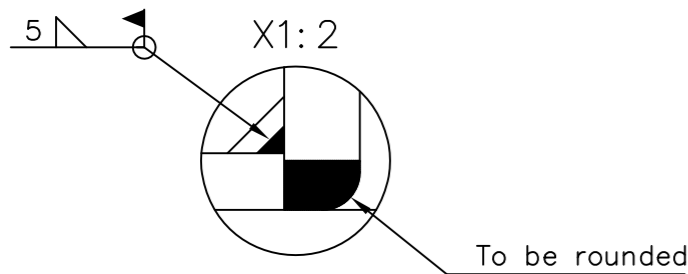
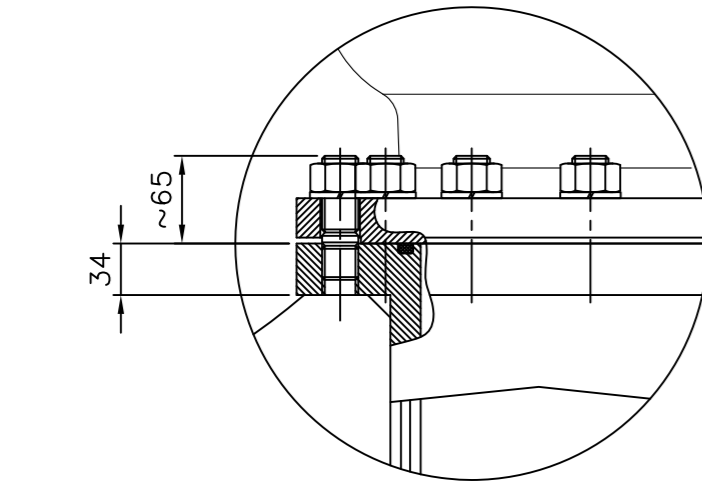


NOTE:
The grade of studs, bolts and nuts:
Min. A4-70 (ISO 3506-1)



Note:
Center of Gravity
if Mounting flange
height is 200mm

Gate valve: 139-085436
Mounting flange: 599-082973
O-ring: 540-095690

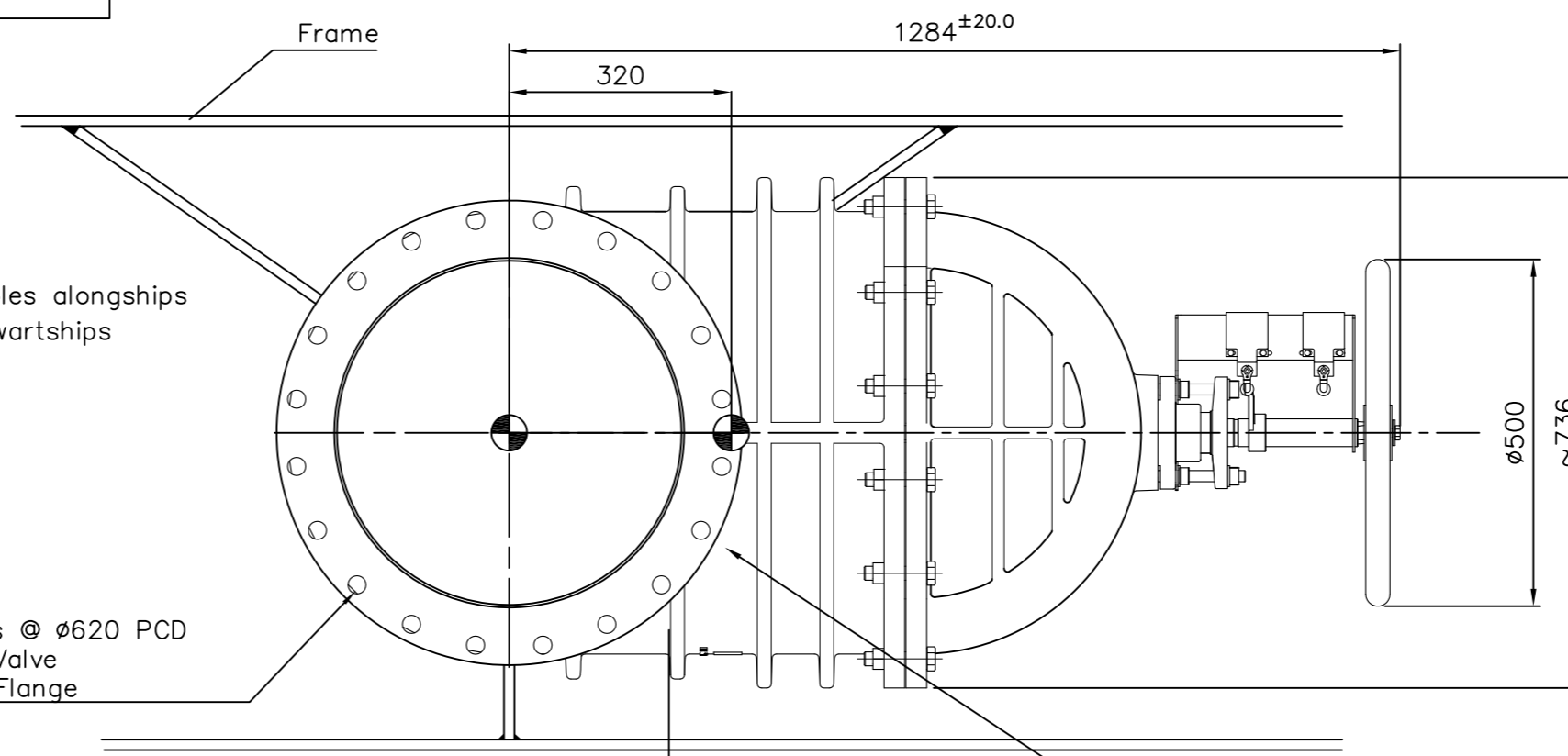


Vertical offset requirement

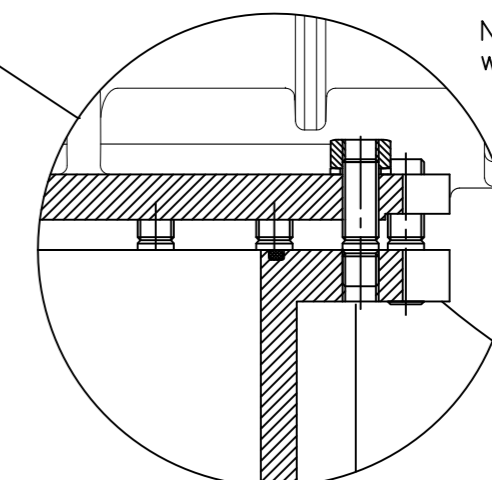
The installation to be approved by the local classification authorities.

Welding to be carried out by certified welder only.

W.P.S. to be worked out by yard.

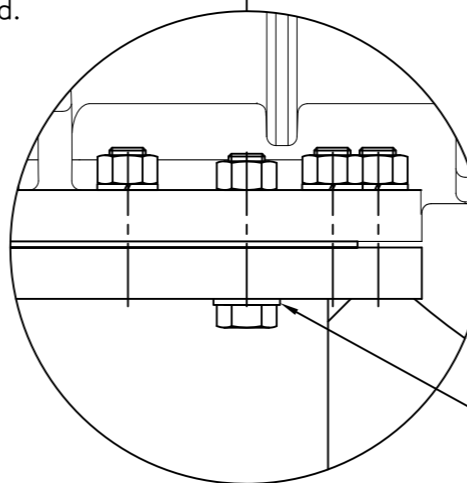
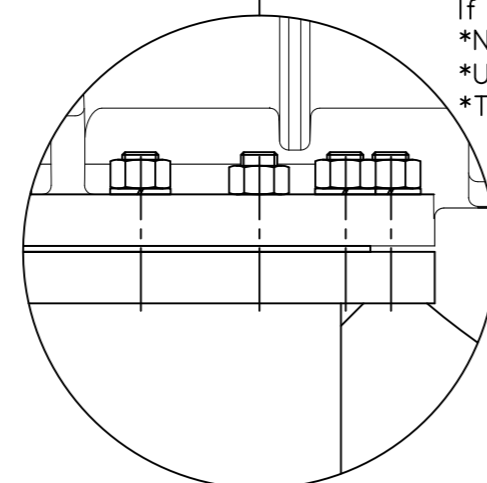


Procedure:
*Lower valve towards flange leaving a gap of ca 15mm.
*Attach nuts and split washers.
*Lower valve onto flange while tightening nuts.
*Lubricant on threads: Use Anti Seize Lubricant from (e.g. CRC, Molycote, Loctite)
*Torque std 472Nm.



Nuts to be attached while gate valve is lifted

Alternative:
If split washer can not be used.
*No split washer or lubricant.
*Use Loctite 270 or similar.
*Torque std 472Nm.



Alternative:
*For indicated and other required positions.
*M24 holes may be drilled to Ø26.
*Replace studs with Hex head bolts M24x100 DIN933, A4-70 ISO 3506-1 (min).
if split washer can not be used.
*No split washer or lubricant.
*Use Loctite 270 or similar.
*Torque 472Nm.

Flat Washer

L	2016.08.23	ECN-002058/A	FL	HAA	JEF
A	1989.08.29	First Issue	EML	BSM	BSM
REV.	DATE	DESCRIPTION	Designed by	Checked by	Approved by
Material: - Surface Treatment: -			Unless Otherwise Stated, Tolerances: DIM.: Threads: Surface:		Class. Code 120951
Kongsberg Maritime AS Subsea Division Horten - Norway			Installation Drawing DN500 Mounting Flange W / Gate Valve		Sheet 1/1
Project / Product name HPR / HiPAP			Project number		Scale 1:10
<small>The reproduction, distribution and utilization of this document as well as the communication of its contents to others without express authorization is prohibited. Offenders will be held liable for the payment of damages. All rights reserved in the event of grant of a patent, utility model or design. © Kongsberg Maritime</small>			Drawing type Information Drawing Document ID 830-083045		Revision/Version L