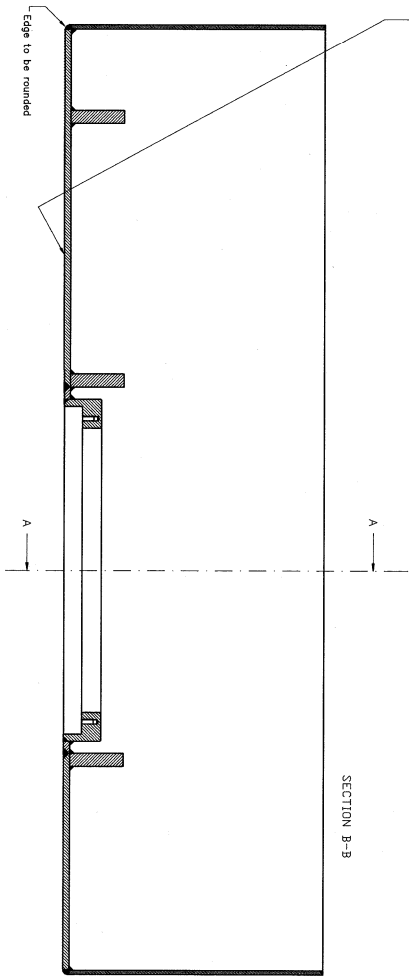
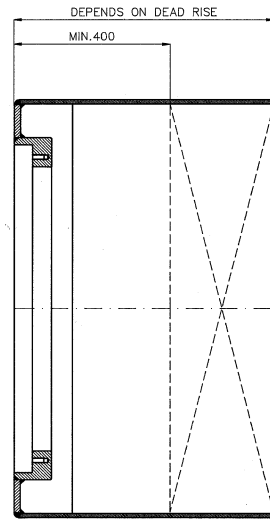


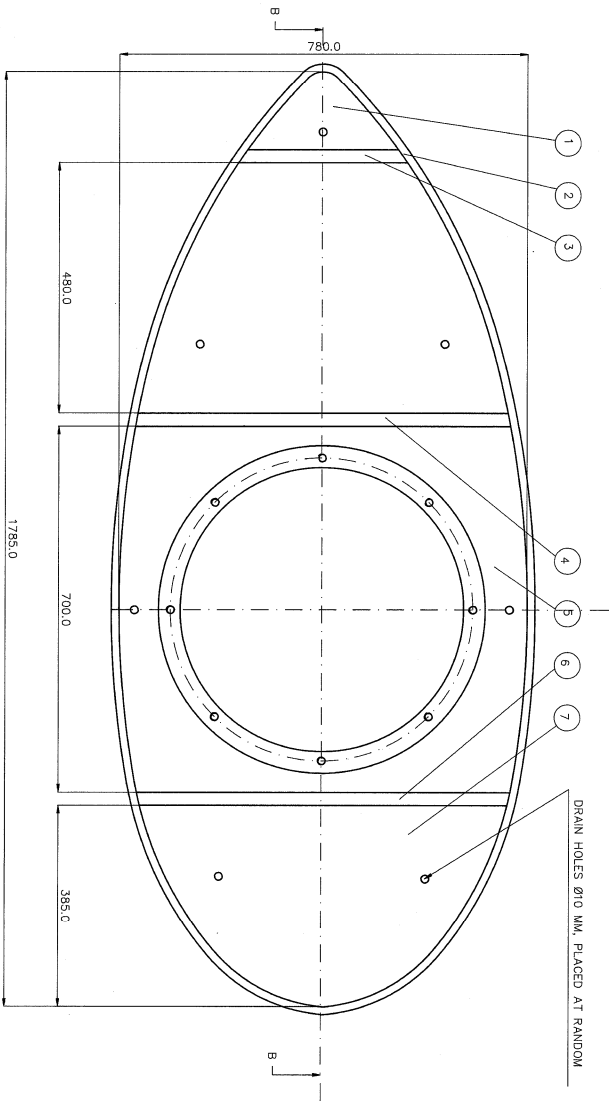
The bottom plate must be completely flat with no convexity, concavity or irregularity. Small hollows (maximum 1 mm) will be accepted.



SECTION B-B



SECTION A-A



DRAIN HOLES Ø10 MM, PLACED AT RANDOM

SURFACE TREATMENT:
 1. SAND BLASTED AFTER GRINDING TO SA 2.5
 2. ONE COATING OF RED FERRIC OXIDE POWDER

ITEM	NUMBER OF	MATERIAL	QTY	NOTE
7	1	SI 52-3N DIN 17100	Plate, 12 MM	
6	2	SI 52-3N DIN 17100	Flat bar 100x25x720	
5	1	MOUNTING RING PRWG. NO. 499-088814		
4	1	SI 52-3N DIN 17100	Flat bar 100x25x717	
3	1	SI 52-3N DIN 17100	Flat bar 100x25x225	
2	1	BUSTER DRAWING NO. 111-082733		
1	1	SI 52-3N DIN 17100	Plate, 12 MM	

REV./ASBY	DATE	REASON FOR CHANGE	APPROVED	DESIGNED	CHECKED	SCALE	DRW. NO.	SHEET 1 OF 1
01	92.03.12	INITIALS OVERSEER SYSTEMS ADVANCE				1:5	111-088813	A
02	92.03.12	Steel Blister						
03	92.03.12	Ceramic Transducer						
04	92.03.12	12-18, 18-11 and 5318						

111-088813
 A