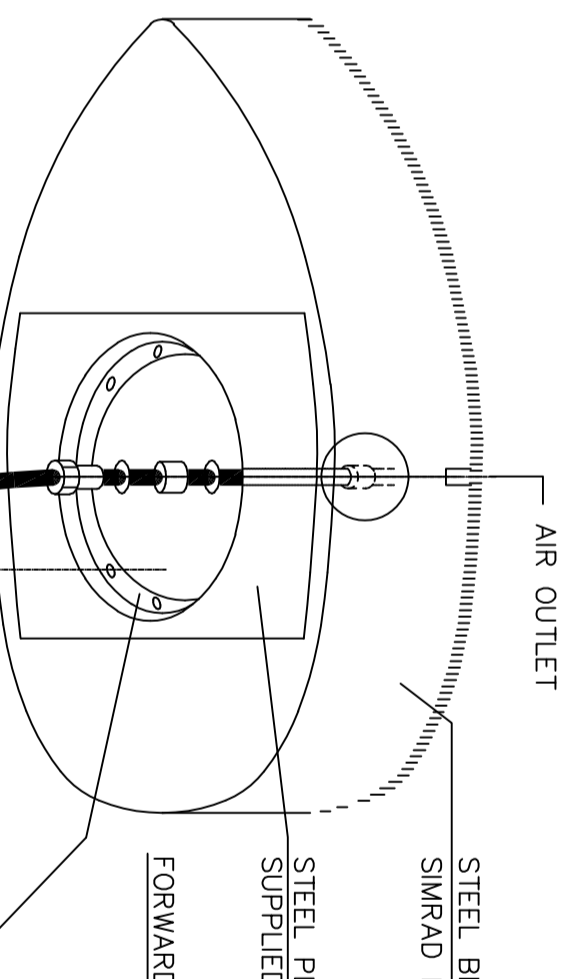


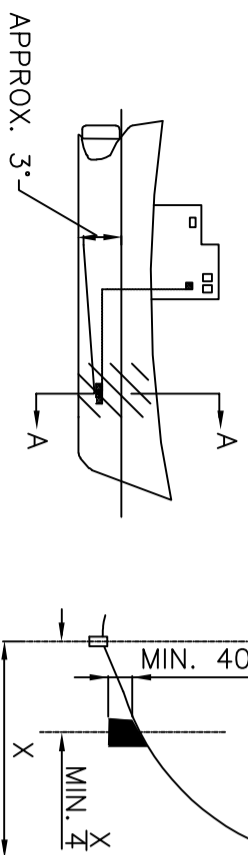
NB: DO NOT LIFT THE  
TRANSDUCER BY IT'S CABLE.

STEEL BLISTER, TO BE MADE BY SHIPYARD.  
SIMRAD DWG. NO. 111-088813

STEEL PLATE WITH MOUNTING RING CAN BE  
SUPPLIED BY SIMRAD. 499-088814

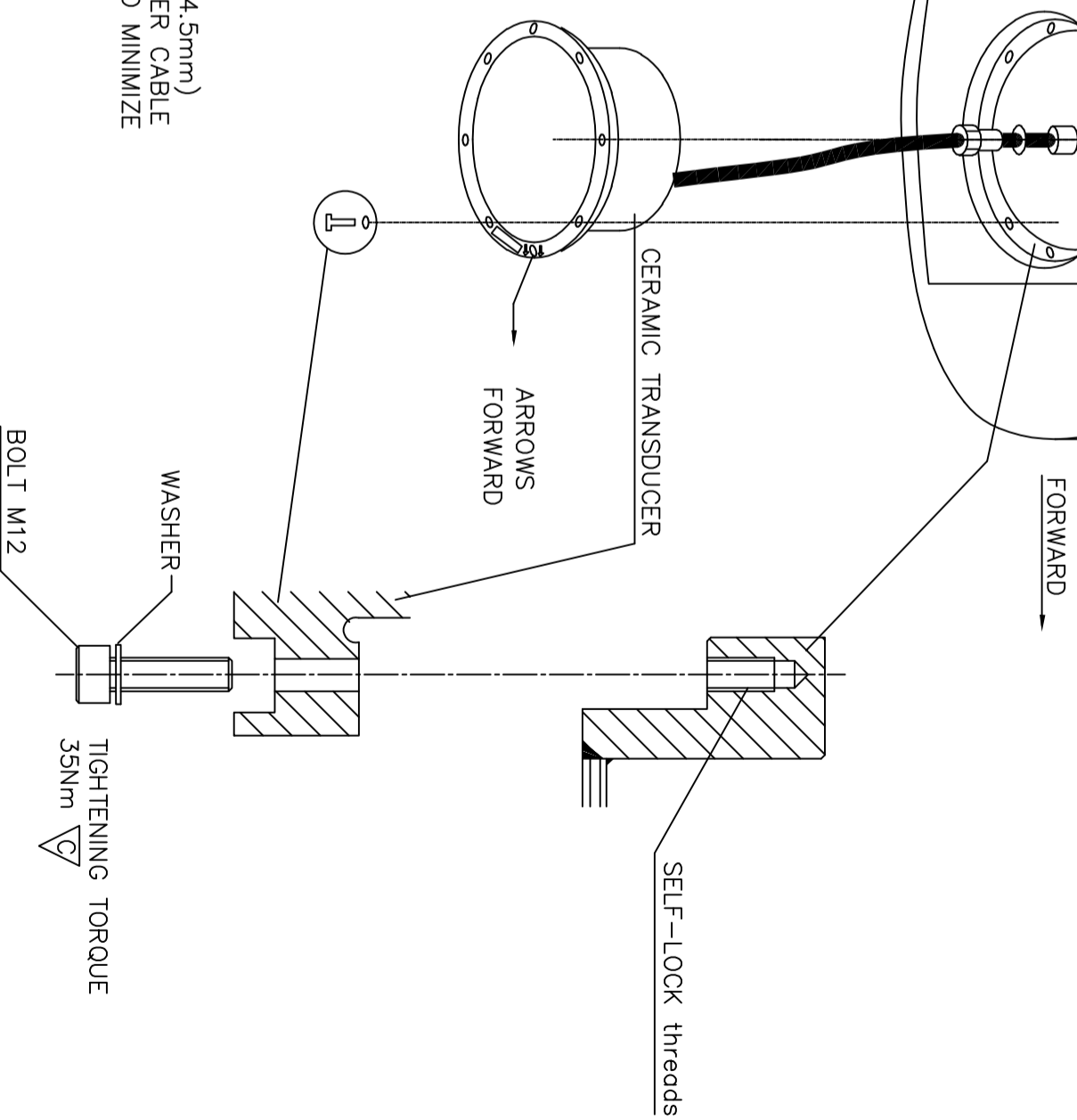
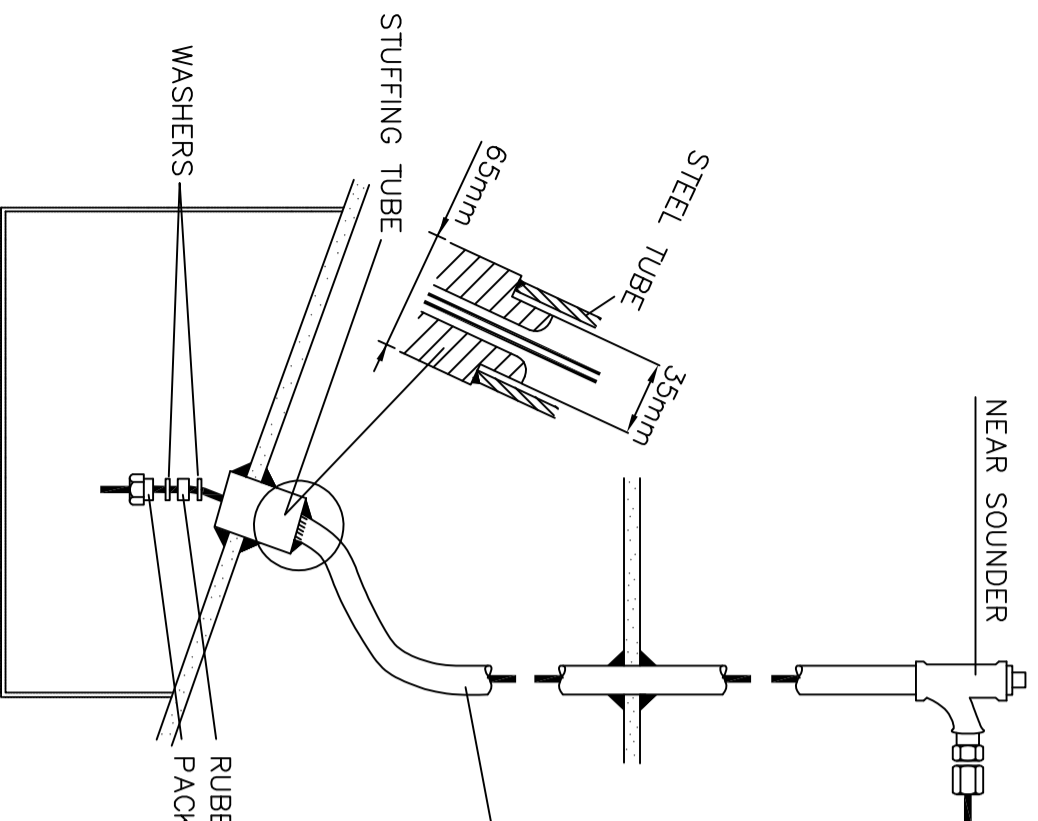


RECOMMENDED LOCATION  
OF TRANSDUCER



The transducer face is made of polyurethane and in general it must not be painted, due to the risk of chemical reaction.  
One type of antifouling paint which can be used is:  
Antifouling Seamate HB 66 from Jotun, Sandefjord, Norway

STEEL TUBE, MIN. 35mm INSIDE DIAM.  
WALL THICKNESS MIN. 6mm (IF GALVANIZED 4.5mm)  
SIMRAD RECOMMENDS TUBING THE TRANSDUCER CABLE BETWEEN THE SOUNDER AND TRANSDUCER TO MINIMIZE ELECTRICAL INTERFERENCE.



REV./SIGN.	B	KTP	C	bøj					
DATE	00.03.27		2019.12.18						
PROJ. METHOD									
SCALE	UNLESS OTHERWISE STATED, TOLERANCE: DIM.: THREAD:								
DRAWN	92.03.12	TW	Mounting arrangement of trans-						
CHECKED	92.05.11	BG	ducer in steel blister						
APPROVED	92.05.12	HK	12-16, 18-11 and ES18						
			PARTS LIST:			SHEET 1 OF 1 SH. SIZE: A3 REV.:			
			SIMRAD A KONGSBERG Company			820-088815 C			
			FILE NO.: CAD03						