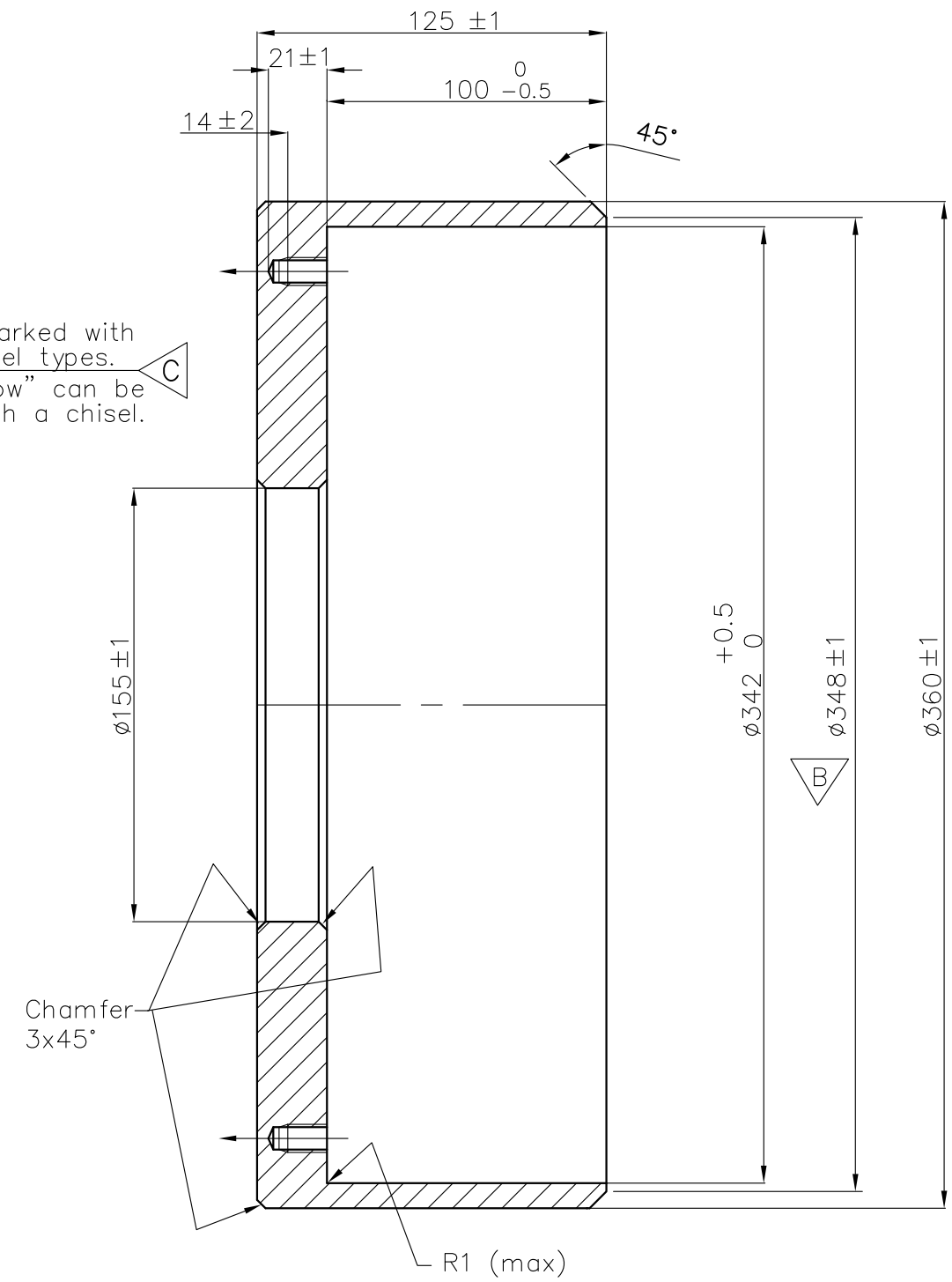


To be marked with 5mm steel types. The "arrow" can be made with a chisel.



Note: The SELF-LOCK threads, which are marked with SL*, must be made in accordance to the SIMRAD procedure 842-202125.

SELF-LOCK taps can be supplied by SIMRAD.



SURFACE TREATMENT:

1. SAND BLASTED TO SA 2.5
2. ONE COATING OF RED FERRIC OXIDE PRIMER

Parts list: 499-203336

Matr.: St 52-3N, (DIN 17 100). Round steel or plate

| | | | | | | | | | |
|--------------|------------|------------|---|-----|--|------------------------|--|---------------|-------|
| REV./SIGN. | B | OMJ | C | BOW | | | | | |
| DATE | 2000.08.30 | 2015.12.17 | | | | | | | |
| PROJ. METHOD | | | UNLESS OTHERWISE STATED, TOLERANCE: DIM.: ISO 2768-mK THREAD: 6g/6H | | | PARTS LIST: 499-203336 | | SIMRAD | |
| SCALE | 1:2.5 | | MOUNTING RING | | | SHEET 1 OF 1 | | SH.SIZE: A4 | REV.: |
| DRAWN | 2000.01.24 | TW | TRANSDUCER | | | 871-203337 | | C | |
| CHECKED | 2000.03.17 | KTP | | | | | | | |
| APPROVED | 2000.03.17 | HB | ES38-10, 38-9, 50-7 | | | FILE NO.: - | | | |