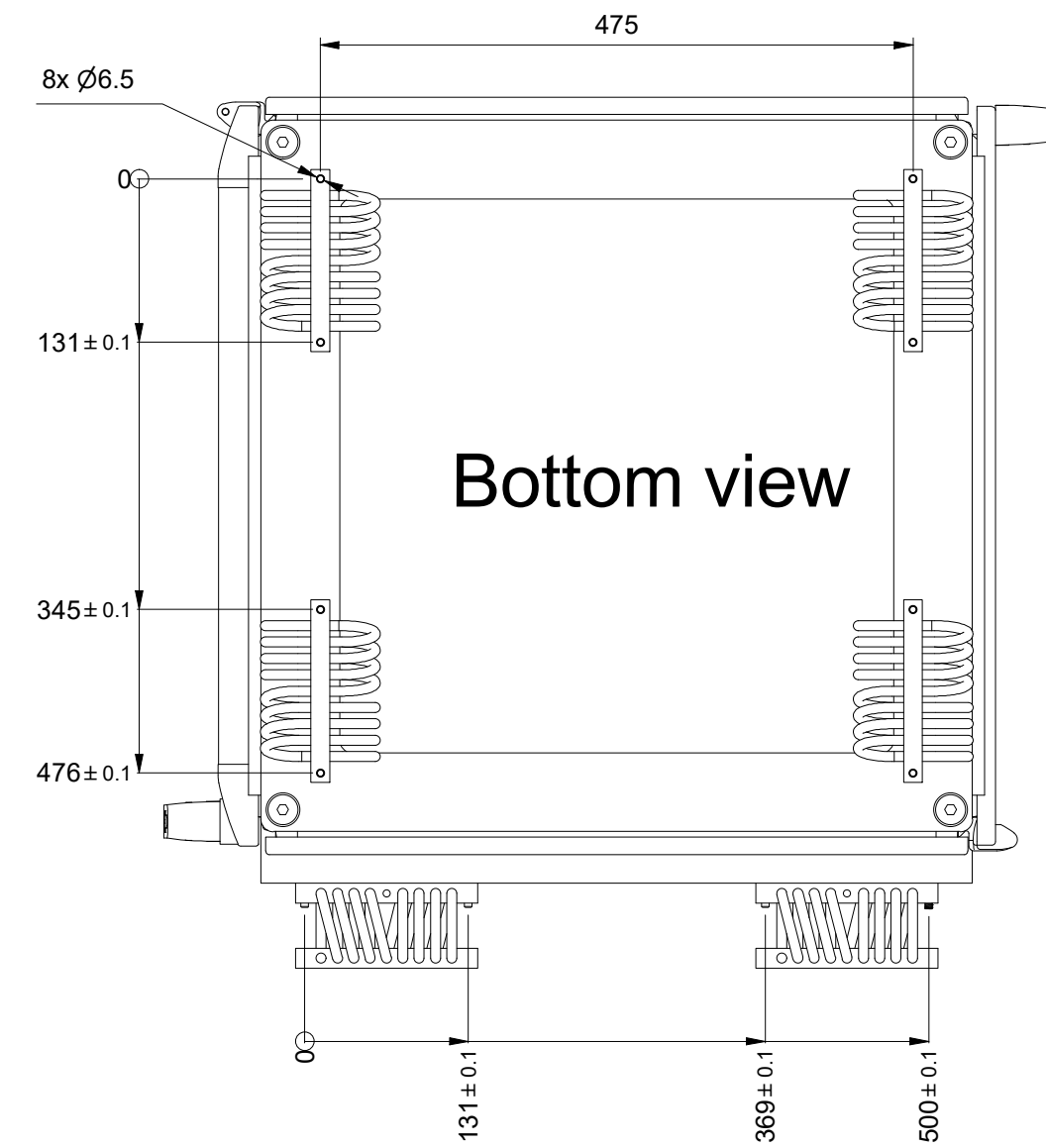
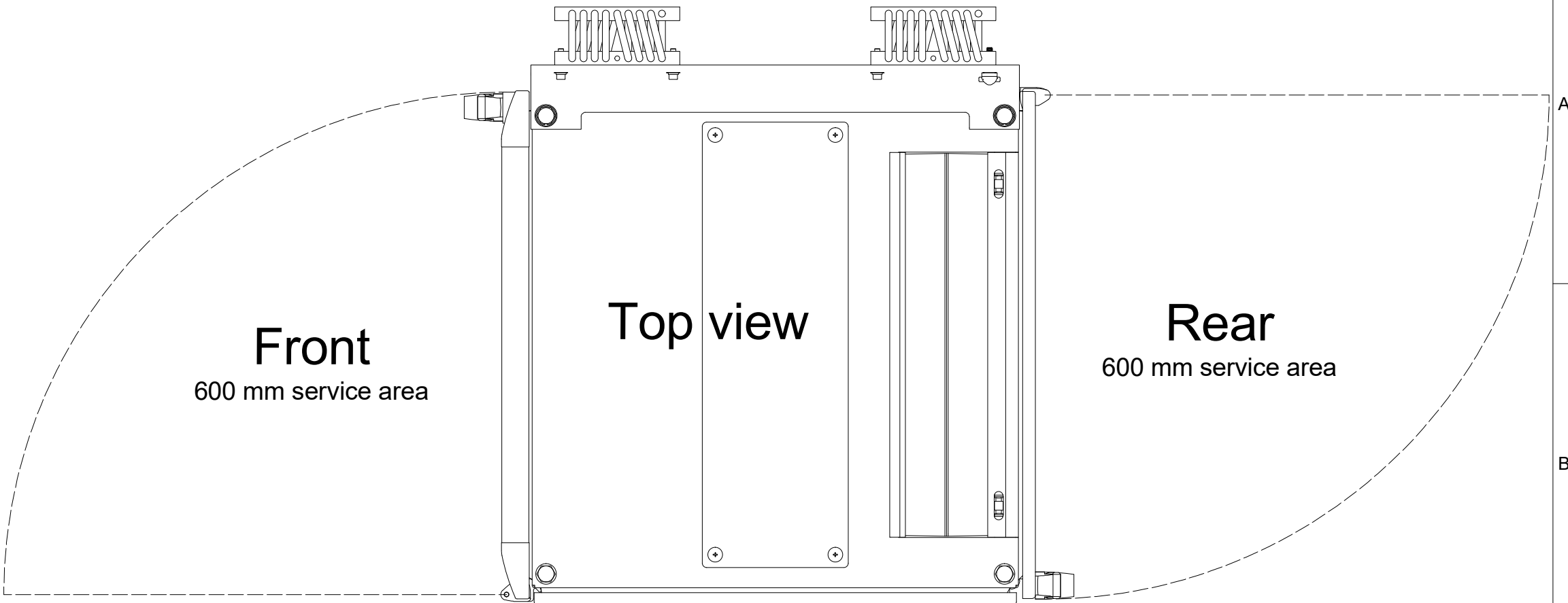
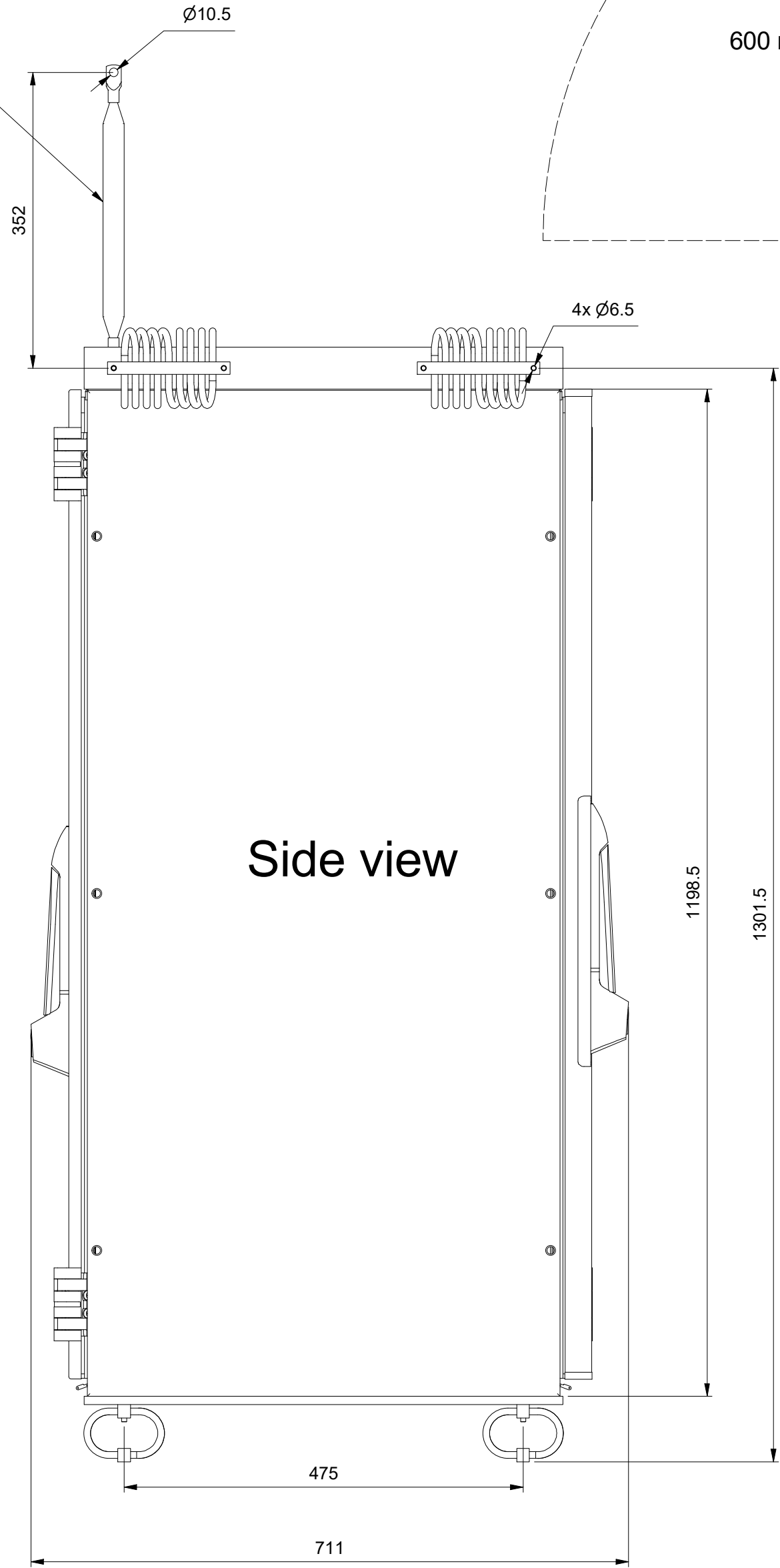
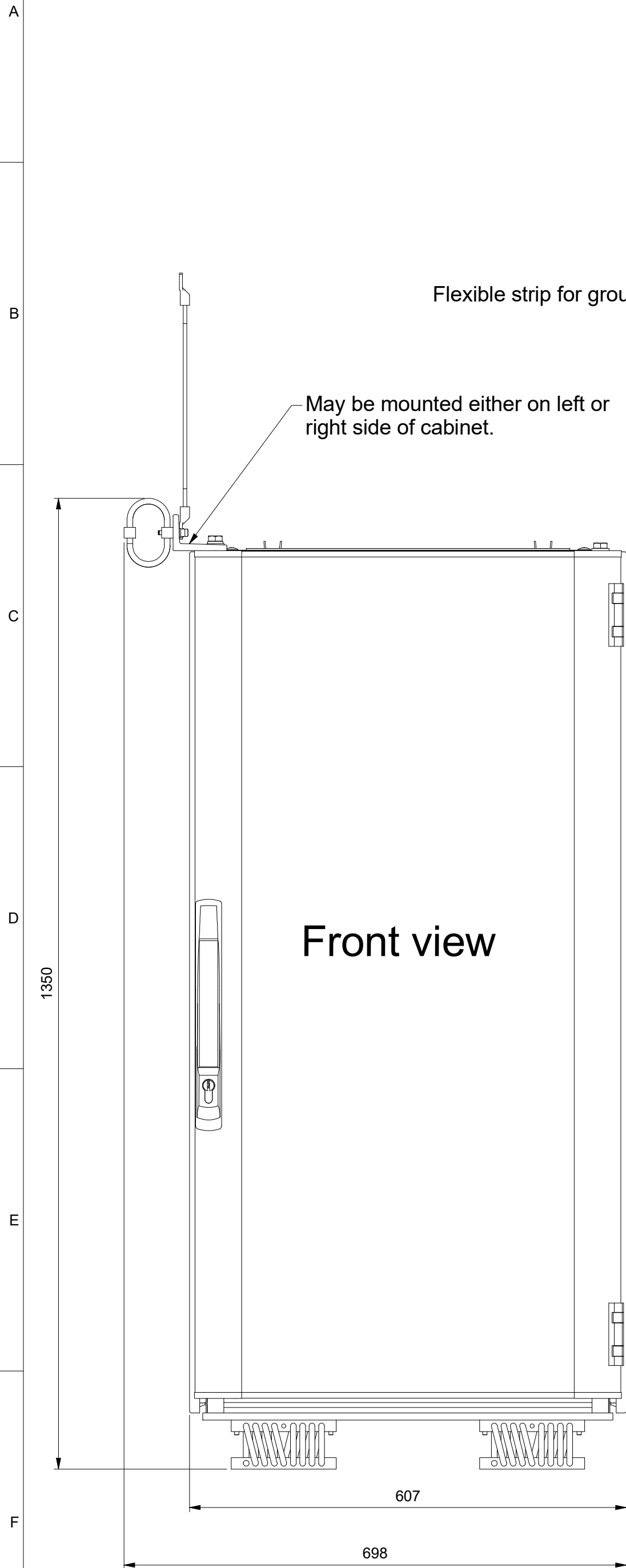


Weight of empty rack (no WBTs and no shock absorbers): approx. 80 kg
 Weight of fully populated rack (Shock absorbers and 6 WBTs): approx: 150 kg



B	2020-05-07	Updated access area and maximum WBTs. Moved top vibration support.	oleel	boj	ivarw
A	2015.02.25	First issue	OJE	BØJ	IW
Rev.	Date	Reason for issue / Description of change	Designed by	Checked by	Approved by
Material:			Surface: Ra 3,2 µm	Threads: 6g/6H	Broken edges: 0,1 - 0,5 x 45°
Surface treatment:			Tolerances unless otherwise stated: ISO 2768-mK		
Project No		Installation No / Item No	Product Name		
		400930			
		Title / Sub title / Drawing Type			
		Outline dimension			
		WBT 19" rack			
		Outline Drawing			
		Information Classification	Document ID		
		Company Shared	400930		
				Scale	1:6
				Size	A2
				Sheet	1 of 1
				Revision	B



The reproduction, distribution and utilization of this document as well as the communication of its contents to others without express authorization is prohibited. Offenders will be held liable for the payment of damages. All rights reserved in the event of grant of a patent, utility model or design. © Kongsberg Maritime