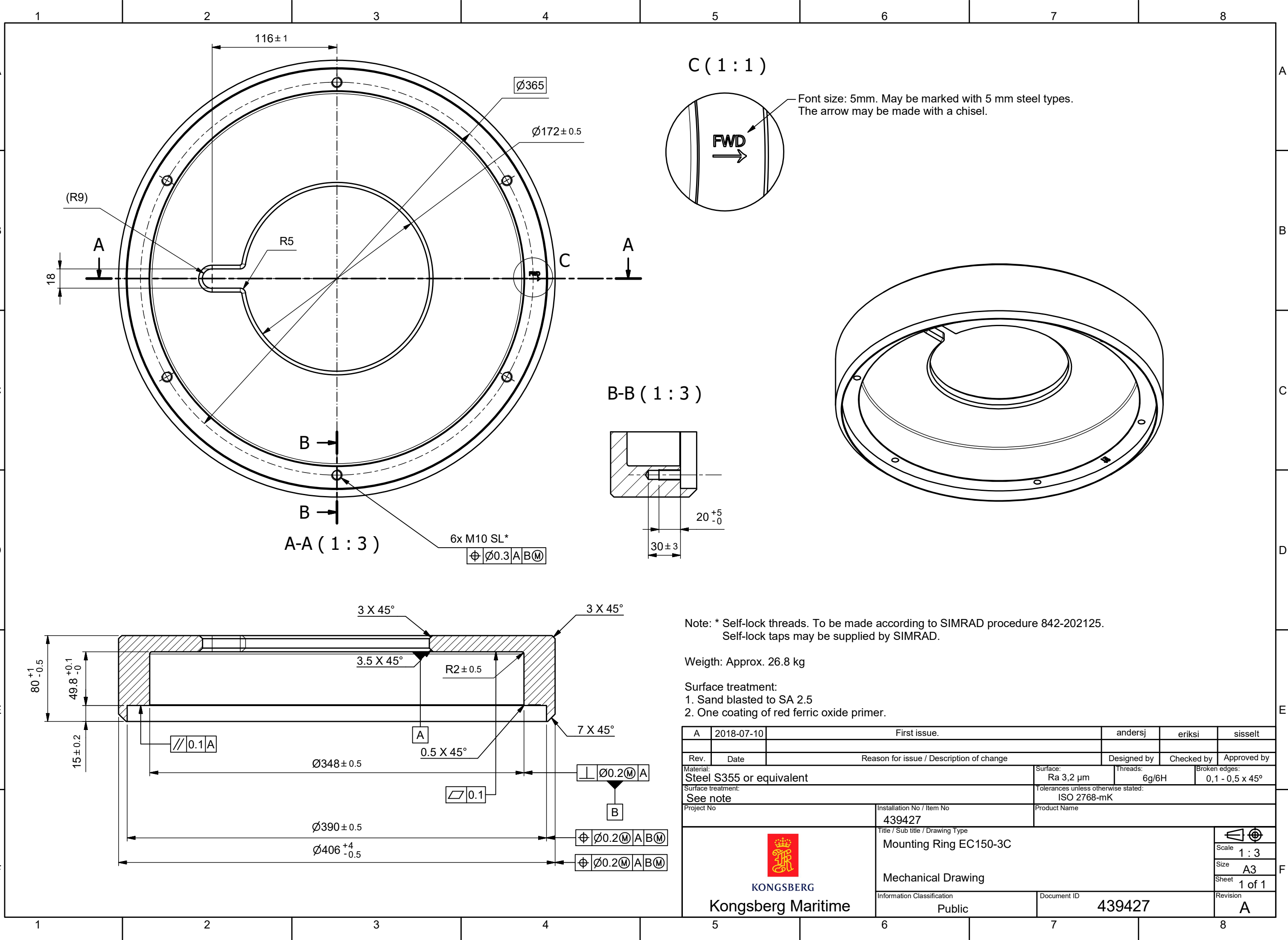


The reproduction, distribution and utilization of this document as well as the communication of its contents to others without express authorization is prohibited. Offenders will be held liable for the payment of damages. All rights reserved in the event of grant of a patent, utility model or design. © Kongsberg Maritime



Note: * Self-lock threads. To be made according to SIMRAD procedure 842-202125. Self-lock taps may be supplied by SIMRAD.

Weight: Approx. 26.8 kg

Surface treatment:
 1. Sand blasted to SA 2.5
 2. One coating of red ferric oxide primer.

A	2018-07-10	First issue.	andersj	eriksi	sissett
Rev.	Date	Reason for issue / Description of change	Designed by	Checked by	Approved by
Material:		Steel S355 or equivalent	Surface:	Ra 3,2 µm	Threads:
Surface treatment:		See note	Tolerances unless otherwise stated:		6g/6H
Project No		Installation No / Item No	Product Name		Broken edges:
		439427	Mounting Ring EC150-3C		0,1 - 0,5 x 45°
Title / Sub title / Drawing Type		Mechanical Drawing		Scale	
Information Classification		Public		1 : 3	
Document ID		439427		Size	
				A3	
				Sheet	
				1 of 1	
				Revision	
				A	



Scale: 1 : 3
 Size: A3
 Sheet: 1 of 1
 Revision: A