

# Simrad EK80 Portable

The Entry: A complete solution for scientific echo sounding

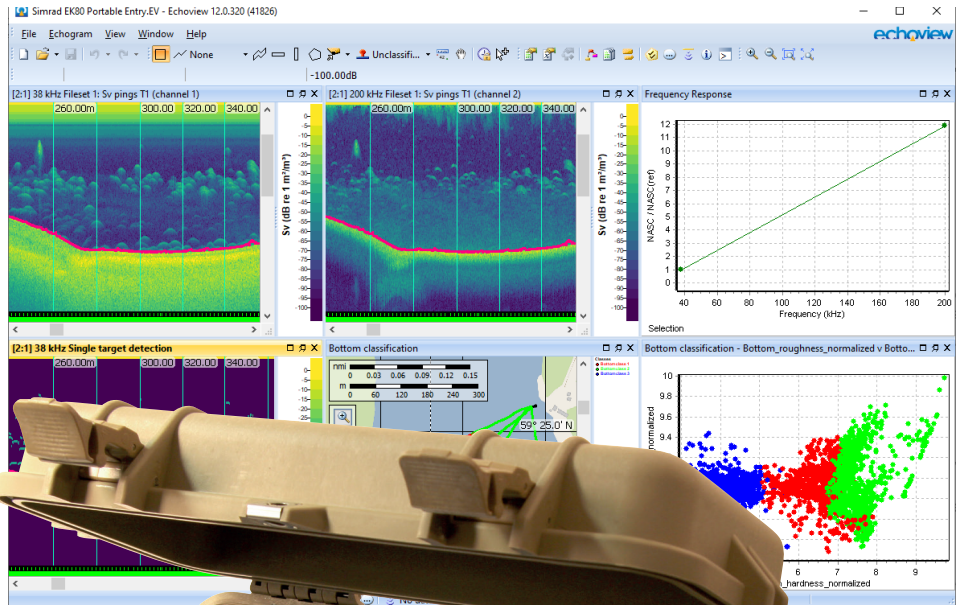
**The Simrad EK80 Portable entry is all you need for ecosystem monitoring and analysis in one package – at a reasonable price.**

This is a complete rugged echo sounder with a built-in computer, GPS and WiFi for remote operation. The core of the product is the WBT Mini, a compact EK80 wideband transceiver with four channels. The Entry bundle uses three of these channels for the 38 kHz split beam, while the last channel is used for the 200 kHz single beam.

The *Echoview* post-processing module offers traditional fish survey analysis. This includes measurement of biomass and size distribution, species separation, ecosystem mapping and habitat classification. The license can import data only from the EK80 Portable entry. Three months of maintenance and technical support is included.

The Simrad EK80 Portable entry is provided with the ES38-18/200-18 transducer. This is a dual frequency transducer combining 38 and 200 kHz in one housing. The beam width is 18 degrees at both frequencies to secure a large sampling volume in shallow water.

Combining high and low

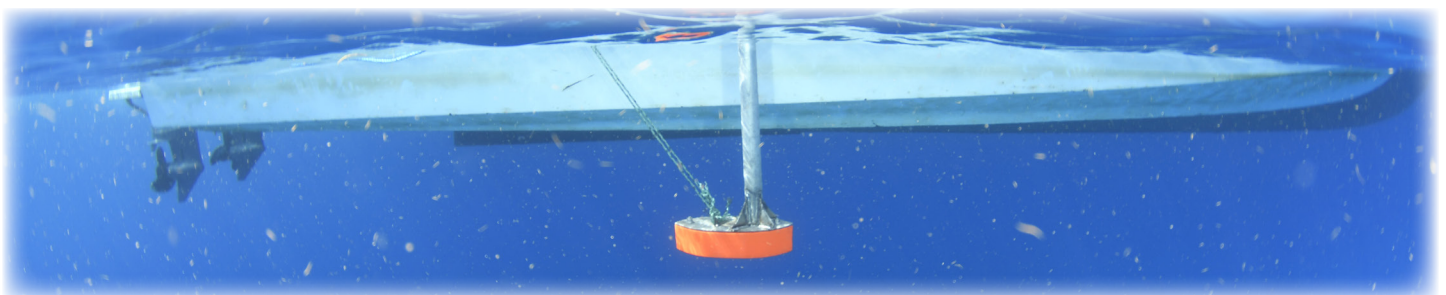


frequencies is ideal for mapping ecosystem components and separating fish from plankton. The 38 kHz is also split-beam for accurate target strength measurements and target tracking.

The Simrad EK80 Portable entry can be upgraded to additional frequencies and FM pulse

transmissions at a later stage.

Likewise the *Echoview* software license is permanent. We can offer upgrades to other EK80 configurations as well as training and extensions of maintenance and support for the entry module.



---

**Simrad**

Kongsberg Maritime AS  
Strandpromenaden 50  
P.O.Box 111  
N-3191 Horten, Norway

Telephone: +47 33 03 40 00  
Telefax: +47 33 04 29 87  
**www.simrad.com**  
simrad.sales@simrad.com

**SIMRAD**