

Simrad EQ50



KONGSBERG



Up to four operating frequencies in a single system

Single-beam multi-frequency fish finding echo sounder

The Simrad EQ50 echo sounder is the perfect tool for any angler, boater or marine enthusiast! If you want to improve your fishing efficiency and do not need the features offered by a split-beam echo sounder, the Simrad EQ50 is the perfect choice. Four different operating frequencies are available with a single transceiver unit.

The Simrad EQ50 uses the same physical units as the well-known Simrad ES80 echo sounder but with single-beam transducers. The Simrad C-All multi-frequency transducer is the best match for the EQ50.

Visit www.kongsberg.com/eq50 for more information, the latest software version, and the end-user documentation.

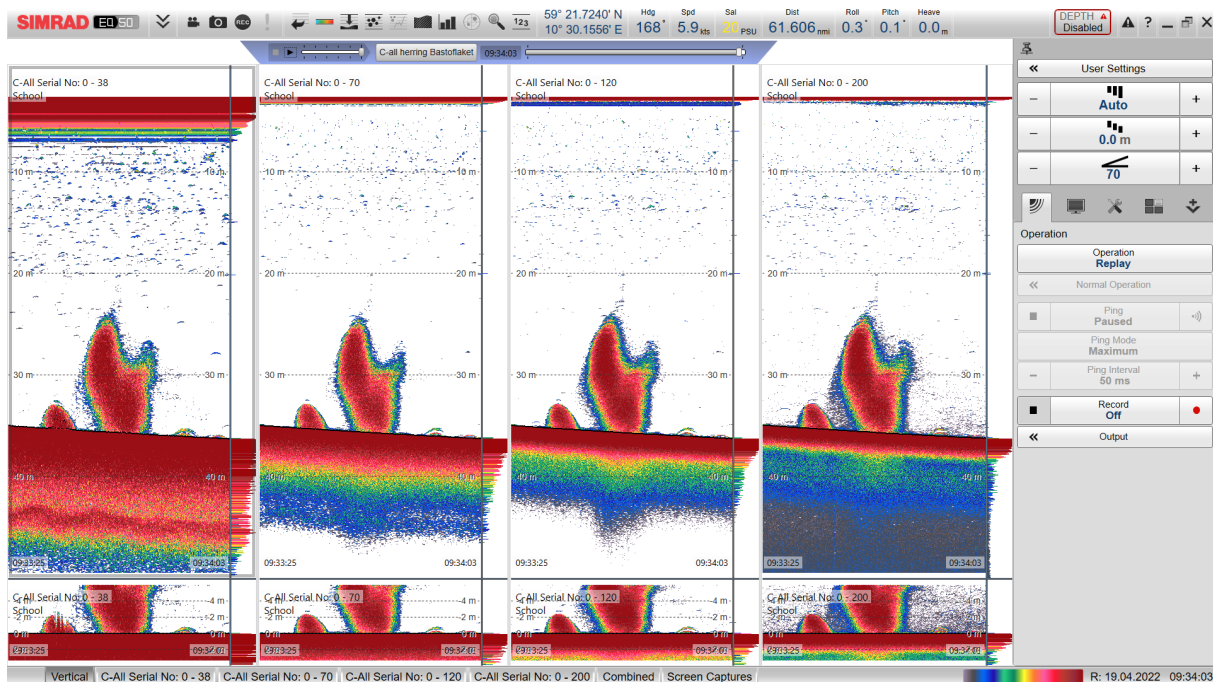
SIMRAD
By KONGSBERG



KEY SPECIFICATIONS

- Frequencies:
 - 38 kHz
 - 70 kHz
 - 120 kHz
 - 200 kHz
- Number of beams: 1 for each operating frequency
- Pulse types: CW or FM
- Range: 1000 m (depending on chosen operating frequency and the acoustic conditions)
- Interfaces: Position, attitude and heading
- Internal sensor: Temperature
- Cable length: 20 metres

The specifications are those valid for the EQ50 with the Simrad C-All transducer.



Screen capture: The Simrad EQ50 can handle four different operating frequencies simultaneously. The license includes all these frequencies. This example shows how the EQ50 can present data from a Simrad C-All transducer.

It is a well-established fact that the echo sounder's operating frequency is essential for good results. This is because the echo strength of different fish species varies with frequency. Some fish species are easier to find with a high frequency than a low one, and vice versa. This is also important if you want to find smaller species, such as shrimp or krill. At the same time, lower frequencies generally have a longer range. A low frequency allows you to find both the fish and the bottom when you work in deep water. For these reasons, many echo sounder systems have more than one transducer. Some users prefer two transducers to work with two different frequencies, while others want more. Additional transducers increase the echo sounder's price and entail increased installation costs.

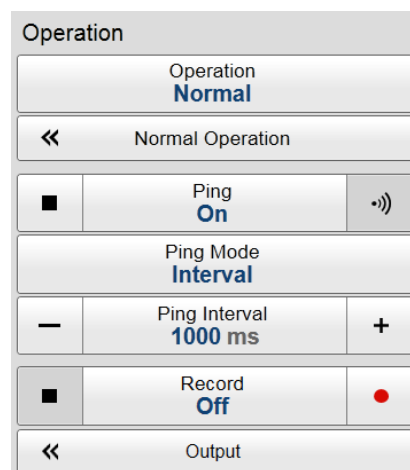
That's why the Simrad EQ50 offers four operating frequencies with only one single C-All transducer.

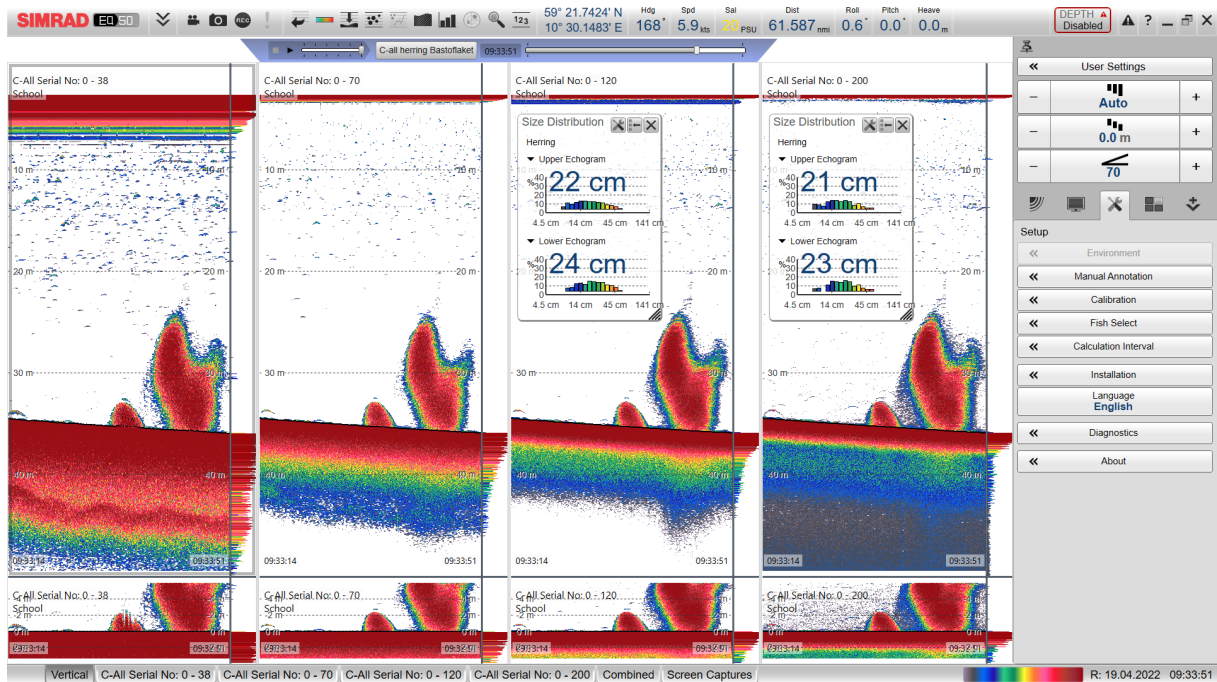
Equipped with advanced digital signal processing technology, the Simrad EQ50 delivers exceptional accuracy and reliability in any condition. With a maximum depth capability of 1,000(*) meters, you can easily detect fish even in the deepest and darkest corners of the ocean.

Screen capture: A comprehensive menu system is available in several languages. It offers access to all relevant settings for operation and echo presentation.

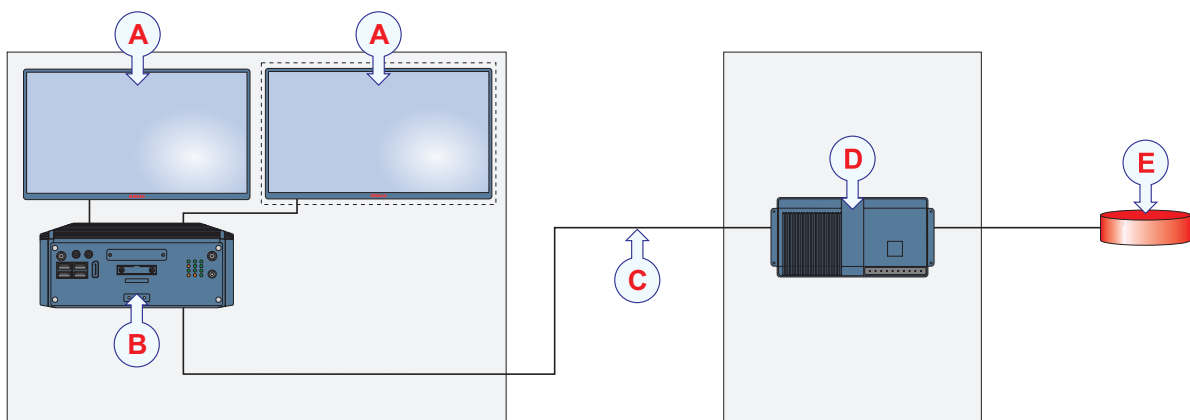
Designed with the user in mind, the Simrad EQ50 is easy to install and use, with intuitive controls and a user-friendly interface. Its compact and lightweight design makes it perfect for use on any vessel, from small boats to large yachts. With the high-resolution display of your choice, you will be able to see everything in crystal-clear detail, ensuring that you never miss a thing.

(*) The maximum depth capability depends on the transducer type, the operating frequency and the acoustic conditions.





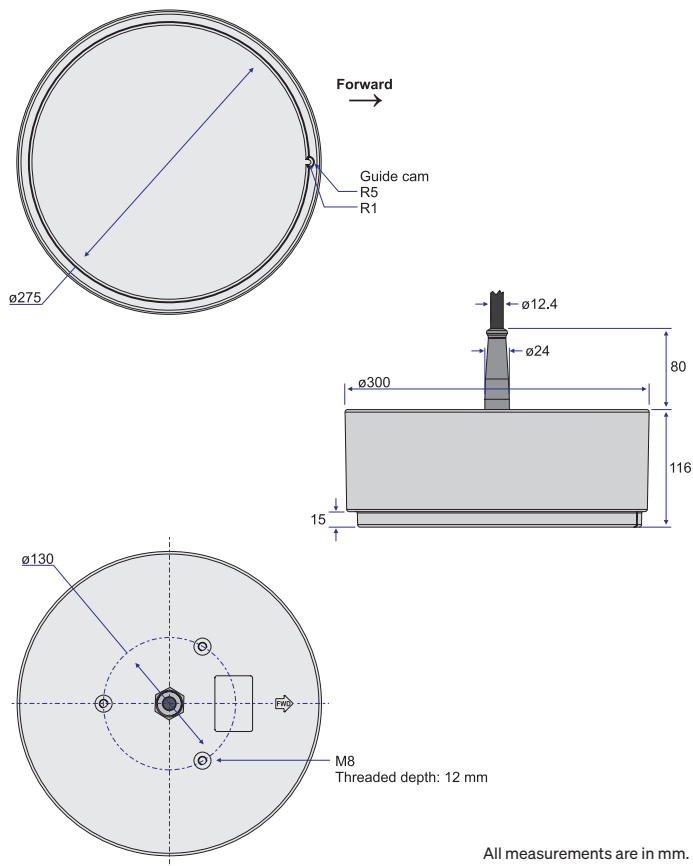
Screen capture: When you use the Simrad C-All transducer, the EQ50 will present the information in four echograms, one for each operating frequency. In this example, you can see two additional information panes. Each panel shows the size of the fish under the keel, as measured with the relevant operating frequency (120 and 200 kHz).



If you want to purchase the Simrad EQ50, you need a computer, a display monitor, a wide-band transceiver and one or more transducers. The EQ50 is a modular system. Each unit is small and easy to install.

The main components are:

- (A) Display monitor (the second display is optional)
- (B) Processor Unit (computer)
- (C) Ethernet communication line
- (D) Wideband Transceiver (WBT)
- (E) Transducer (Simrad C-All or any other compatible transducers of your choice)



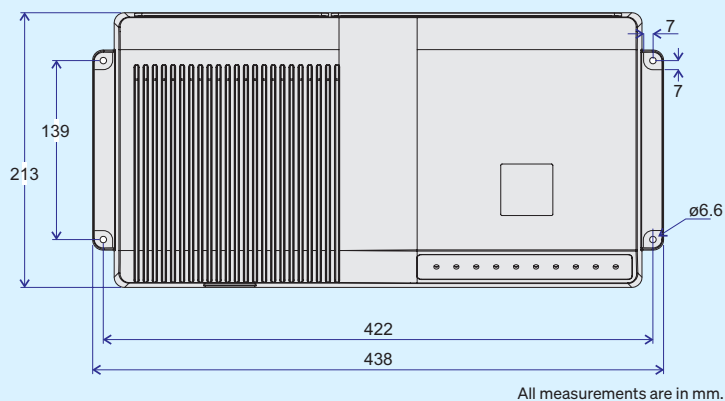
Simrad C-All

The Simrad EQ50 can use any compatible single-beam transducer. However, we have created a “best-fit” transducer with the multi-frequency Simrad C-All.

The Simrad C-All is a single-beam transducer designed for fish-finding applications. The transducer body includes four different transducer elements providing four operating frequencies: 38, 70, 120 and 200 kHz.

The C-All transducer is a long-awaited solution for many users. You get a complete frequency range with four different operating frequencies in a single transducer body. The transducer is also specially adapted to our Wideband Transceiver (WBT). This means that you – with only a few main parts - can assemble a professional single-beam echo sounder suitable for all types of fishing.

The Simrad C-All offers a large bandwidth. This bandwidth provides a fine range resolution. This resolution is essential for single-fish detection and target strength measurements.



Simrad WBT

The Simrad EQ50 uses the well known Wideband Transceiver (WBT). This is the same transceiver that is used - with different configurations - in other echo sounder systems for fish-finding, seabed mapping and scientific research.