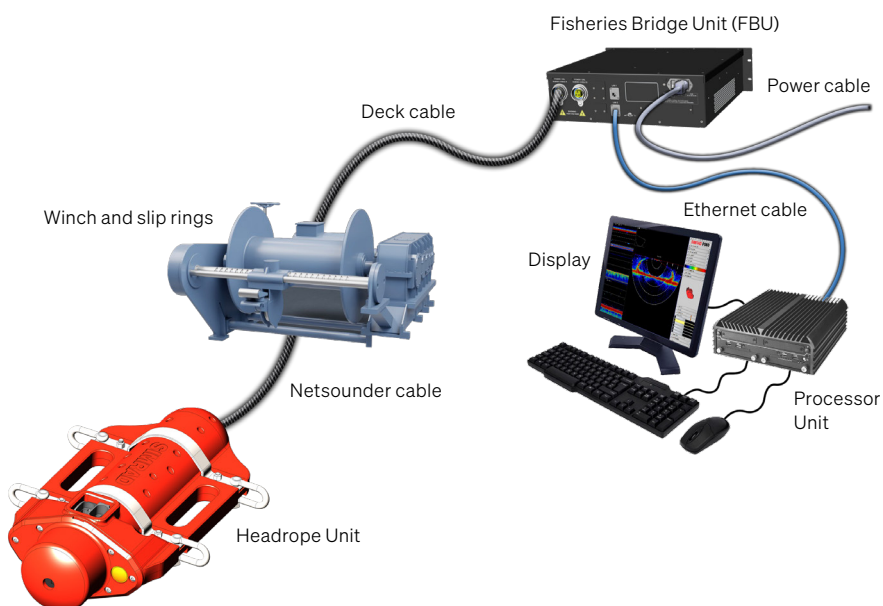


Fisheries Bridge Unit

SIMRAD
By KONGSBERG

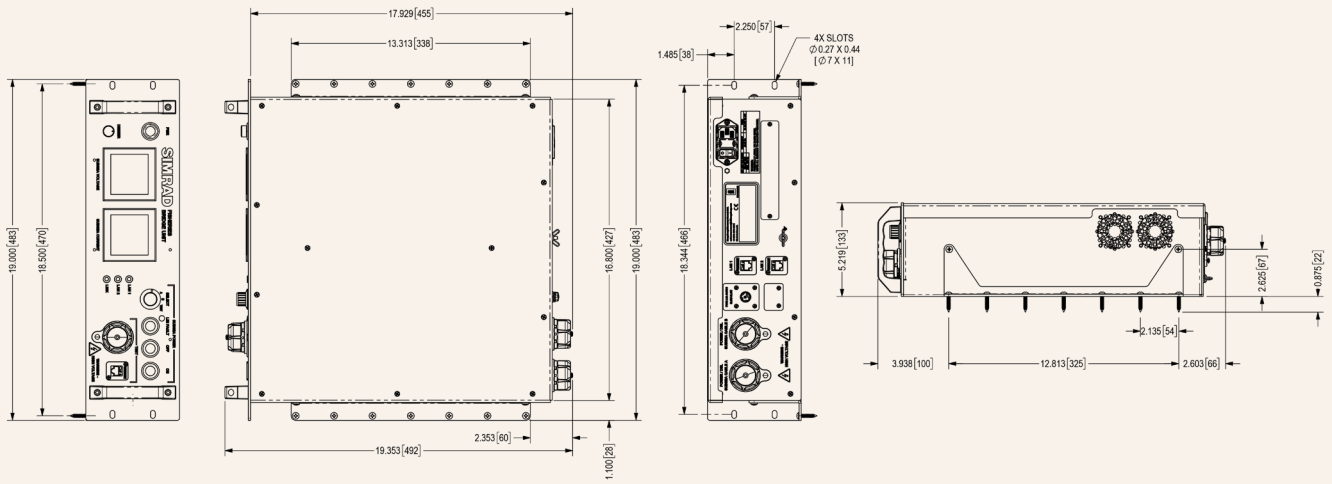


Topside device for trawl power and telemetry



FEATURES

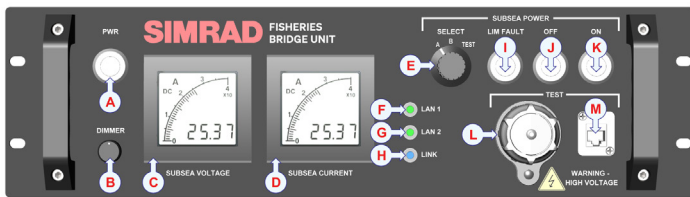
- Provides all the interface and power-supply functionality for the Simrad FS80.
- Connects via Ethernet to a computer running the FS80 software.
- Receives data communication (such as sonar images) from the Headrope Unit through a netsounder (third-wire) cable.



Technical specifications

Fisheries Bridge Unit

| | |
|-----------------------|---|
| Input power | 115-240 VAC / VA @ 900VA max, 50/60 Hz |
| Output power | 400VDC @ 2A max |
| Cable ports | Two netsounder cable ports on the rear panel and one test-cable port on the front |
| Ethernet ports | Three Ethernet ports (10Base-T / 100Base-TX communication)—two on the rear panel and one on the front |
| Cable interface | High-bandwidth DSL multiplexing over coaxial cable |
| Cable safety | Integrated ground-fault detection system and front-panel status display |
| Built-in meters | Netsounder cable voltage meter and netsounder cable current meter |
| Operating temperature | 0° C to +50° C |
| Storage temperature | -40° C to +70° C |
| Weight (estimated) | 10.07 kg (22.2 lb) |
| Height | 133 mm (5.2 in) |
| Width | 483 mm (19 in) |
| Length | 492 mm (19.4 in) |
| | 19-inch 3U rack mountable |



- A Main power button
- B LED dimmer dial
- C Cable voltage meter
- D Cable current meter
- E Cable selector switch
- F LAN 1 network switch activity LED
- G LAN 2 network switch activity LED
- H Cable telemetry activity LED for DSL modem
- I Line Insulation Monitor button
- J High Voltage stop button
- K High Voltage start button
- L Cable connector for test cable
- M Ethernet connector for test connection

Specifications subject to change without any further notice.