



KONGSBERG

SIMRAD FX SYSTEM

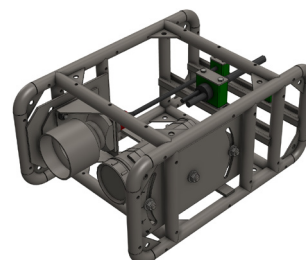
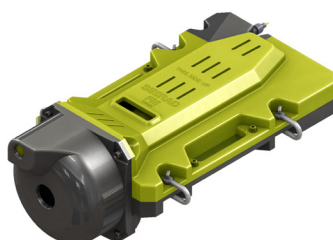
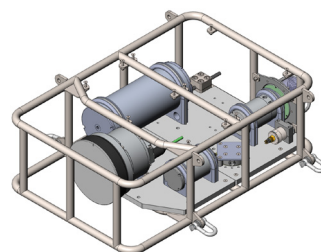
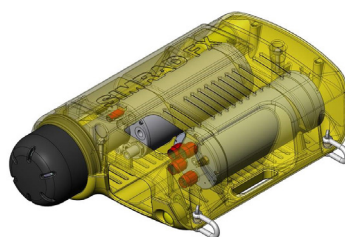
YOUR CHOICE OF:

- sonars heads
- deployment packages
- cameras
- sensors

to suit most fisheries and research needs

SIMRAD FX SYSTEM

The world's most advanced trawl-mounted cable system



SIMRAD
By KONGSBERG

PUBLIC



A real solution to the challenge of sustainable fishing

The fishing industry demands tools that enable sustainable fishing. The FX system is Simrad's answer.

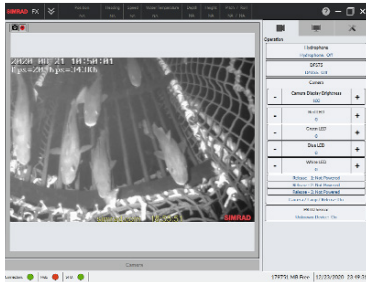
The FX system is a next-generation trawl monitoring system from Simrad. Simrad was one of the pioneers of cable-based trawl monitoring systems and is credited with introducing the world's first trawl sonar in 1986.

In addition to acoustically identifying species and fish size, our customers

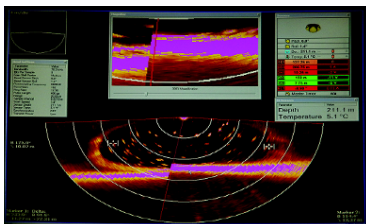
want to see what actually goes into the net and to be able to take action immediately to avoid bycatch.

The FX system features the industry's fastest data link and is able to stream sonar images, sensor data, and video in real time. The system is expandable and can be interfaced with various compatible devices.

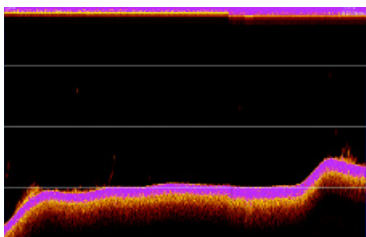
FX System overview



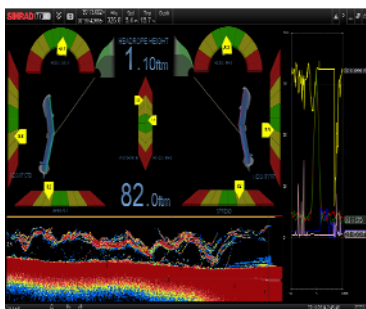
Live camera



Sonar



Trawl Sounder



TrawlEye and Sensors



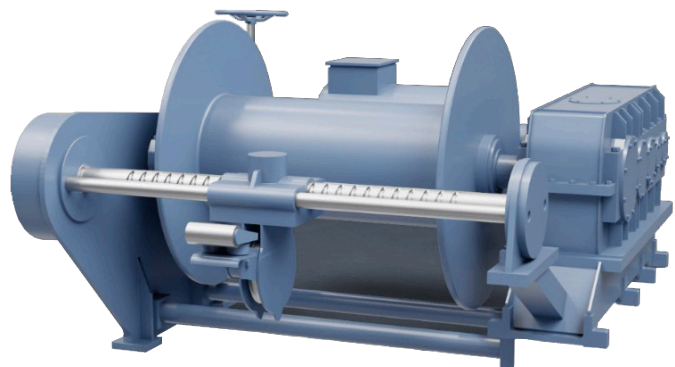
Surface Telemetry Unit (STU)



Ethernet switch

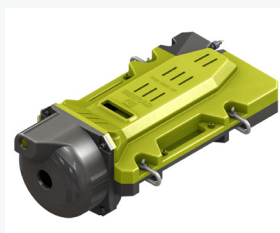


Optional processors with software

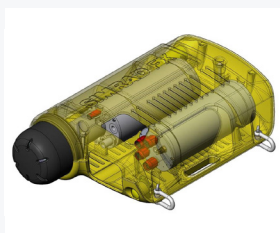


Kongsberg Maritime Net Sounder Winch with up to 3000 m of 11 mm coaxial cable

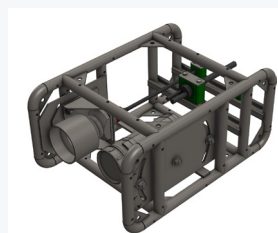
Current choice of Headrope Units, Cameras, Releases and other devices:



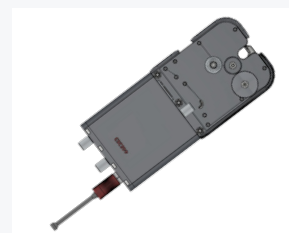
FM90i



FX80i

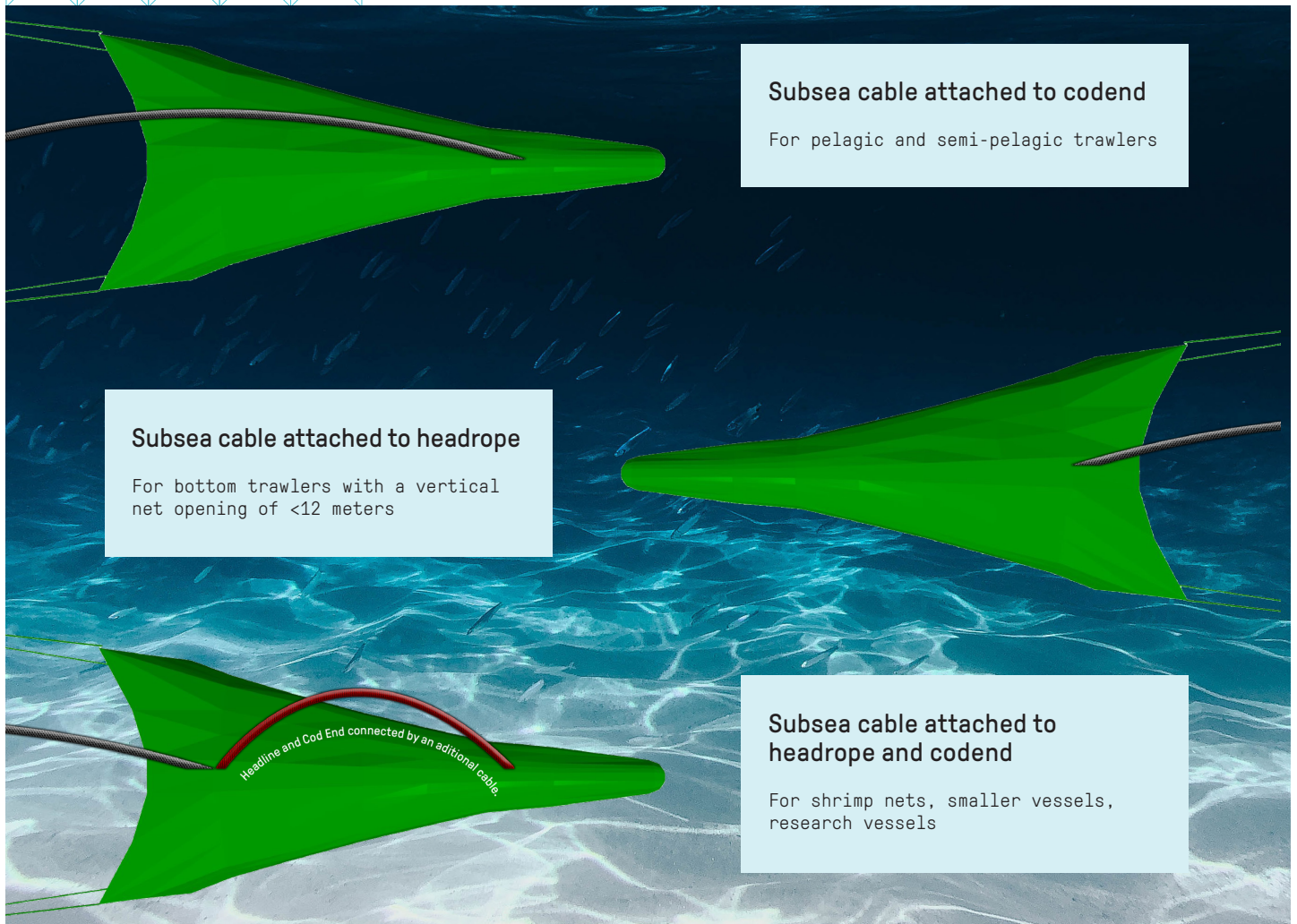


Colour IP Camera



Mechanical Release

Deployment options



TECHNICAL INFORMATION

Cable Voltage:	400 V @ 2Amp
Power Supply:	115-240 VAC
Subsea Voltage Supply:	24 or 48 VDC (depending on port configuration)
Link Speed:	Up to 8 Mbps on 2500 m of 11 mm coaxial cable
Provided Ports:	One 48V port (for sonar head) and three 24V ports
Number of Supported Devices:	Up to four Ethernet devices (including up to two cameras and lights), or up to three Serial devices

Specifications subject to change without any further notice. Standard terms and conditions apply. Consult factory prior to ordering.

KONGSBERG PROPRIETARY: This document contains KONGSBERG information which is proprietary and confidential. Any disclosure, copying, distribution or use is prohibited if not otherwise explicitly agreed with KONGSBERG in writing. Any authorised reproduction in whole or in part, must include this legend. © 2021 KONGSBERG – All rights reserved.