



KONGSBERG



FC50 Camera and FL50 Lamp shown with optional deployment frame and cables

FC50 CAMERA UNIT

SIMRAD FX

Specialized Low-Light IP Camera and Lamp for Trawling

Our new low-light monochrome camera was created with the needs of fishermen in mind. At depths of over 100 meters - where no sunlight ever penetrates - the FC50 Camera provides crisp, clear images of the catch and net with very limited illumination.

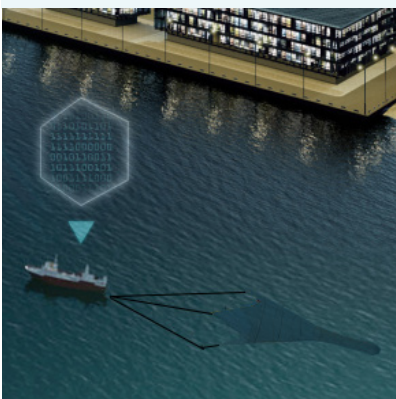
A high-performance, low-light, professional imaging sensor is at the heart of this camera. With proper lighting and water clarity, this camera can even monitor the footrope on low-opening bottom trawls.

The powerful, torch-like FL50 subsea lamp uses the latest LED technology for high-lumen output and maximum efficiency. The lamp can be mounted with the camera in a deployment frame or mounted away from the camera to side light the scene, allowing you to cut down on reflections from plankton and sediment. Having a lamp port right on the camera simplifies wiring on the net.

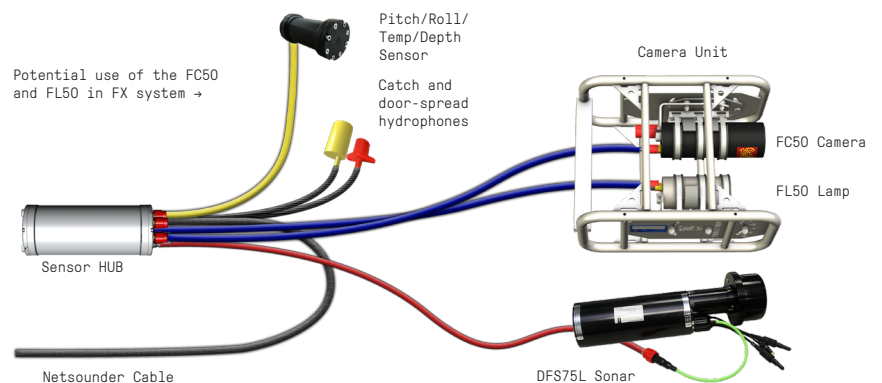
For ease of use, Simrad's FX software integrates the controls for the camera and lamp (including fine dimming control) into the FX system.

SUPPORT FOR:

- FX80i Headrope Units
- FM90i Headrope Units*
- Camera-only FX systems

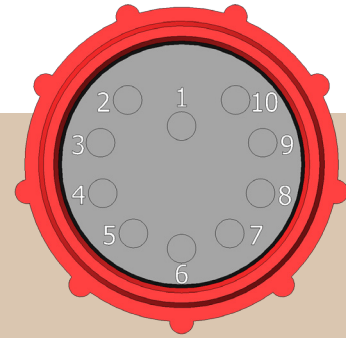


* FM90i operates lamp at reduced power



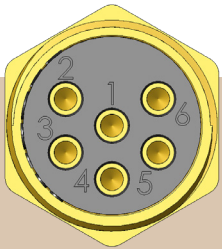
FC50 CAMERA TECHNICAL DATA

Field of View:	90° in water
Sensitivity:	0.005 Lux
Input Voltage:	20-48 VDC
Typical Current:	160 mA @ 24 VDC and 81 mA @ 48 VDC
Network Interface:	10/100 Mbps Ethernet
Compression:	H.264, H.265
Typical Bitrate:	4 Mbps (high-res setting)
Default Resolution:	352x240 (CIF setting) or 704x480 (D1 setting)
Default Frame Rate:	25 fps
Depth Rating:	1000 m
Housing Material:	Aluminium (Hard Anodised - Black)
Connectors:	MCIL10F and MCIL6F
Length:	300.3 mm
Diameter:	90 mm
Weight in Air:	2.04 kg
Weight in Water:	0.52 kg
Operating Temp:	-10° C to +50° C
Storage Temp:	-30° C to +70° C



CONNECTOR TO LAMP: SUBCONN MCBH10F

PIN #	PIN FUNCTIONS
Pin 1	GND
Pin 2	20-48 VDC
Pin 3	Not connected
Pin 4	Not connected
Pin 5	TX+
Pin 6	TX-
Pin 7	RX+
Pin 8	RX-
Pin 9	Not connected
Pin 10	Not connected



CONNECTOR TO HUB: SUBCONN MCBH6F

PIN #	PIN FUNCTIONS
Pin 1	GND
Pin 2	20-48 VDC
Pin 3	TX+
Pin 4	TX-
Pin 5	RX+
Pin 6	RX-

FL50 LAMP TECHNICAL DATA

Housing Material:	Aluminium (Hard Anodised - Black)
Diameter:	80 mm
Length:	192 mm
Weight in Air:	1.72 kg
Weight in Water:	0.94 kg
Depth Rating:	1000 m
Lumens in Water:	5000 Lumens via white LEDs
Beam Pattern:	Flood 110°
Input Voltage:	20-48 VDC
Current:	Maximum 1.8A @ 24V DC
Power:	~43W
Control:	4-wire 10/100 Mbps Ethernet
Operating Temp:	-10° C to +40° C
Storage Temp:	-30° C to +70° C

Specifications subject to change without any further notice.

