

Simrad PX miniDepth



KONGSBERG



Depth sensor

PX miniDepth

The PX miniDepth is a wireless sensor designed to monitor the depth of your gear. By integrating a pressure sensor into its lid, the PX miniDepth continuously measures the surrounding water pressure to calculate the depth. It then provides the accurate depth for the gear it's mounted on.

Use depth sensors to monitor the net's depth throughout the fishing manoeuvres in your purse seine operations. The sensor will provide crucial information. This information lets you track the net's performance and sink rate as it descends to its target depth. This data helps minimize the risk of the catch escaping from the net and enhances the likelihood of a successful catch.

When you fish with a trawl, use the miniDepth sensor to monitor the depth of the trawl.

The PX miniDepth also provides temperature measurements. This combination of depth and temperature is often helpful. Fish are sensitive to temperature changes, as the temperature affects their metabolism and movement. Certain species prefer specific temperature ranges, so monitoring this helps locate fish schools more effectively.

KEY FEATURES

- The Simrad PX miniDepth offers the possibility of combining Depth, Temperature and Battery measurements.
- This gear monitoring sensor is considerably smaller and lighter than other sensors, which improves its performance during operations.

SIMRAD
By KONGSBERG

Available measurements

The specific measurements the sensor can make depends on its physical location on the gear, and on the type of receiver you use. Excepted error is 1% of the configured measurement range. The measurement error depends on the acoustic receiving conditions.

To receive information from this gear monitoring sensor, you need a suitable receiver (PI or SR Series), one or more hydrophones, and a computer running the Simrad TV80.

When configured for a PI receiver, the PX miniDepth sensor can only make the following measurement:

- PI Depth

When configured for a SR receiver, the PX miniDepth sensor can make one or more of the following measurements:

Trawl

- Depth
- Temperature
- Roll
- Pitch
- Battery

Purse Seine

- Depth
- Temperature
- Pitch
- Battery

Battery lifetime

The battery lifetime of a sensor depends on its number of measurements and their update rate, channel and output power, as well as the water temperature. Normal charging time for a fully depleted sensor battery is approximately three hours.

To enhance battery life, the sensor supports depth activation, ensuring it remains inactive until it reaches a depth of 5 meters. This option is located in the "Advanced" menu in the configuration window inside TV80.

Technical specifications

Maximum depth:

1.000m (unless otherwise specified on the sensor lid)

Communication transducer:

- Beamwidth: 60° (-3dB)
- Source level: 187dB (maximum power)
- Communication range: typical 1.500 - 2.000 m

Pitch angle measurement:

±90° (±2° accuracy)

Depth accuracy:

0.1% of full scale depth

Update rate:

1.9-35 seconds approximately

Weights and outline dimensions:

Weight in air: 5kg approximately

Weight in water: 2kg approximately

Outline dimensions:

- Height: 98 mm
- Width: 178 mm
- Length: 238 mm

Kongsberg Discovery AS
P.O. Box 50
N-3191 Horten, Norway
Telephone: +47 3303 4000
E-mail sales: simrad.sales@simrad.com
E-mail support: simrad.support@simrad.com
www.kongsberg.com/simrad



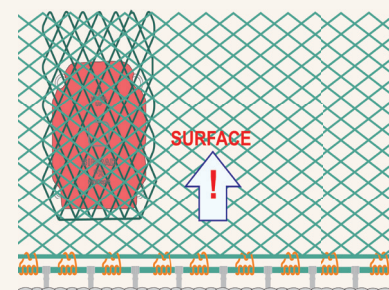
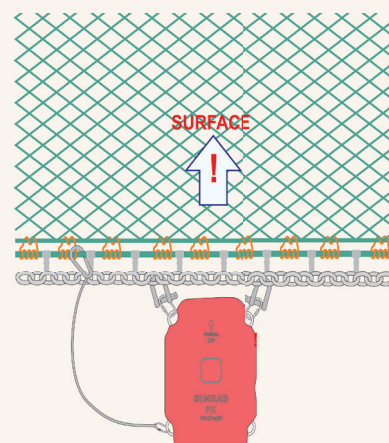
Mounting

For maximum performance, place your sensor on the sink line on the purse seine mountings.

We recommend the use of Quicklink with break load rating not exceeding 580kg.

We also recommend installing the miniDepth in a small pocket on the side of the net to avoid excessive metal within its communication path to the vessel.

Please refer to miniCatch datasheet for information on Trawl mounting.



Order information

To order the PX miniDepth system, or any of the optional items provided with it, contact your local dealer.

Deliverables

- 110-0081468 PX miniDepth

Optional items

- 378931 Mounting kit
- 378767 PX Configurator cable

SIMRAD
By KONGSBERG