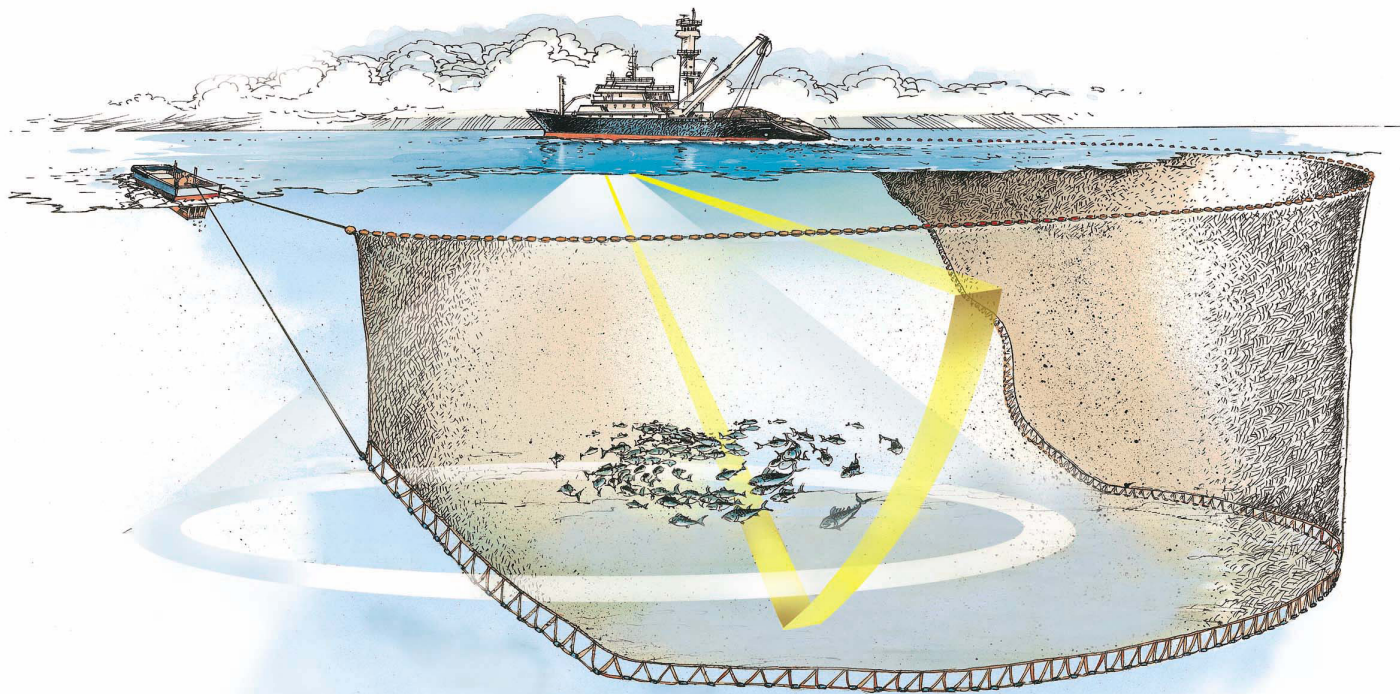


Software release note

Simrad SX90 SW 2.1.3



Introduction

This document describes the software and other changes introduced with the following new software versions:

- **SX90 SW 2.1.3**

This software controls all functionality in the Simrad SX90 sonar. This includes transmission and reception, beamforming, interfaces with external peripherals and sensors, and all user interface (sonar presentations and menus).

Software changes

These are described on page 2.

Documentation changes

New revisions of the Installation, Operator and Reference manuals have been provided. A new Quick Start Guide has also been created. The

reference manual is also provided as context sensitive online help on the products, as well as a separate website for easy online access to the information.

Note that all documents can be downloaded from the product website: www.simrad.com/sx90

Do I need the new software?

We strongly recommend that all users with older software versions upgrade their sonar systems.

Do I need to upgrade?

Nothing happens if you do not wish to upgrade. However, you will then not be able to take advantage of the changes that have been implemented.

As a general rule, we always

recommend that the latest software version is used on our products.

How do I perform the update?

End users are not permitted to perform this software update. To do the software upgrade you must contact your local dealer.

(Turn the page for more information)

Software changes

Emergency hoist

Software now supports interface for emergency hoist functionality. Dedicated commercial hardware is required to facilitate this function. See the SX90 Installation manual for more information.

New RCG functionality

The RCG function has changed to include nine different settings. It is no longer a filter with nine “strength” settings, but provides different filter alternatives. See the operating manuals for more information.

Secondary Operating Panel

Installation menu changed to include dedicated parameter dialog for interface to dual Operating Panel operation. See the SX90 Installation manual for more information.

Synchronization with external clock

Installation menu changed to allow synchronization of sonar clock to external clock received on ZDA format from peripheral device. See the SX90 Installation manual for more information.

Display gain

Display gain functionality changed to provide better gain resolution with additional selectable steps. See the operating manuals for more information.

NOTE: When the sonar is restarted after the software upgrade, it will automatically retrieve the gain value that was last used. This may be a low value (typically 5). Since the Display Gain is now selectable between 1 and 20, the gain may appear significantly weaker than it was before.

To compensate for this, choose a higher Display Gain value. 10 is the new default. All existing user settings must be altered, as these are normally stored with either 5 or 6 as gain settings. Reload the setting, change the Display Gain value, and save the user setting again.

External motion reference unit

Installation menu changed to include dedicated parameter dialog for interface to external motion reference unit. See the SX90 Installation manual for more information.

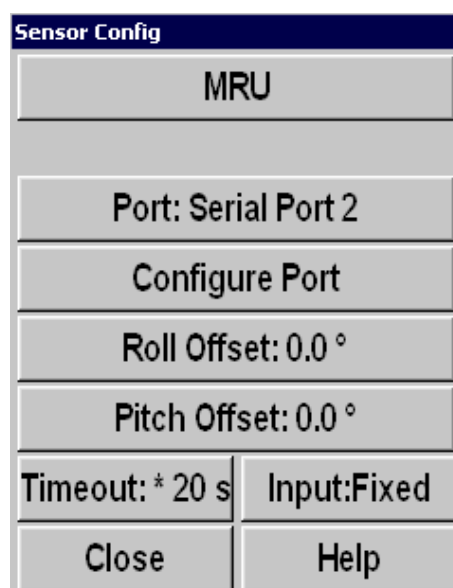
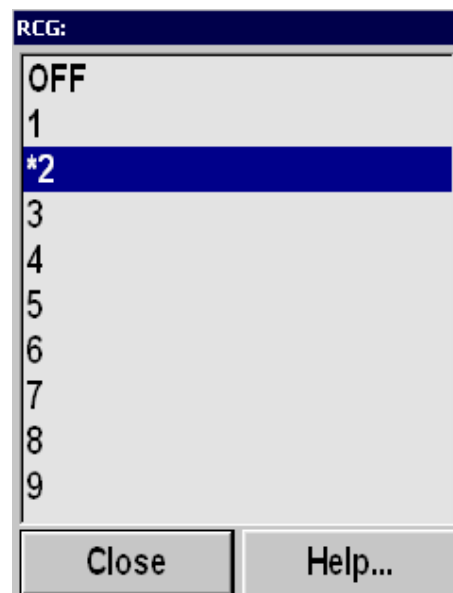
Raw data export

The SX90 can now export sonar information on a new raw data format designed for scientific purposes. This new format is an addition to the existing scientific output format.

NOTE: The new raw data format is an optional function. A dedicated instruction manual will be provided.

Bug fixes

Multiple bugs reported by end users, dealers and internal test and support personnel have been rectified.



Simrad

Kongsberg Maritime AS
Strandpromenaden 50
P.O.Box 111
N-3191 Horten, Norway

Telephone: +47 33 03 40 00
Telefax: +47 33 04 29 87
www.simrad.com
simrad.sales@simrad.com

SIMRAD