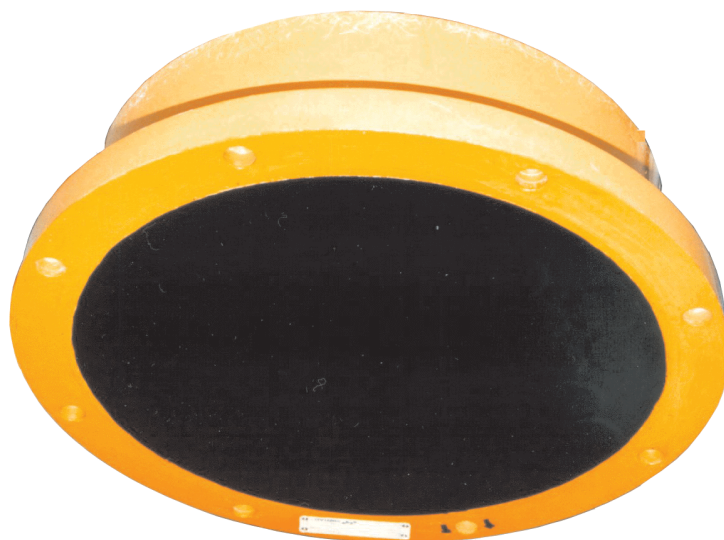


18 kHz split-beam transducer



Introduction

The ES 18 is a split-beam transducer incorporating 44 tonpilz elements distributed over four quadrants. The following specifications are valid when all four quadrants are connected in parallel.

Order number

KSV-088694

Technical specifications

Resonant frequency..... 18 kHz

Circular beamwidth..... 11 ±2 deg

Directivity:

D..... 300 ±20 %

DI=10 log D..... 25 ±1 dB

Equivalent two-way beam angle:

ψ 0.020 ±20 %

10 log ψ -17 ±1 dB

Side lobes..... less than -18 dB

Back radiation..... less than -35 dB

Impedance:

Nominal value..... 15 ohm

Max. variation in |Z|..... 11 to 20 ohm

Max. variation phase angle..... ±30 deg

Transmitting response..... 182.0 ±2 dB
(dB re 1 μPa per V)

Receiving sensitivity, open circuit..... -174 ±2 dB
(dB re 1 V per μPa)

Electroacoustic efficiency..... 0.60 ±0.20

Maximum input pulse power..... 2000 W

Maximum continuous input power..... 100 W

Maximum transducer depth..... 50 m

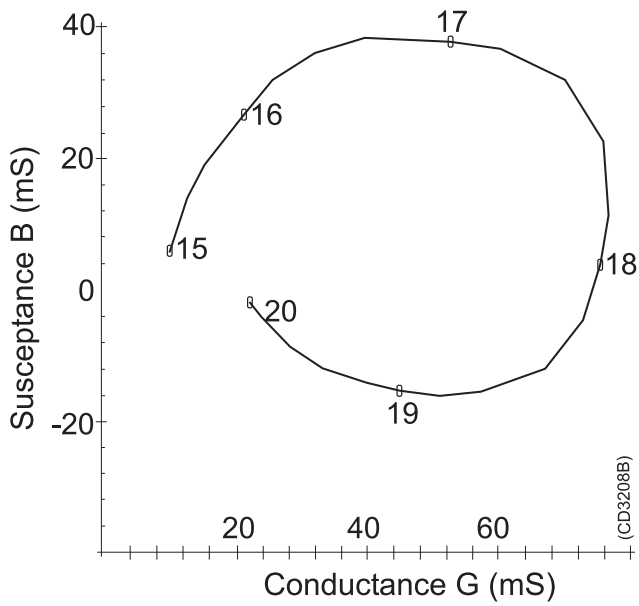
Cable length..... 20 m

Cable diameter..... 17.3 mm

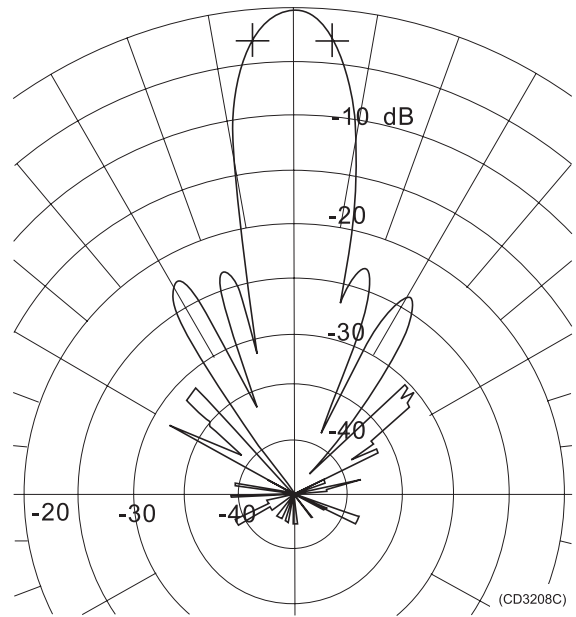
Weight with cable..... 85 kg

Storage temperature..... +70 to -20 °C

Data

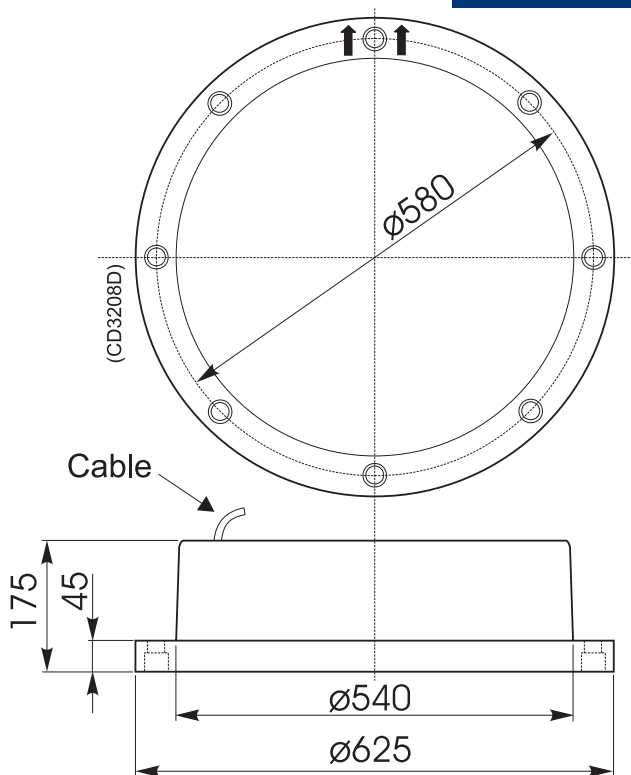


Admittance

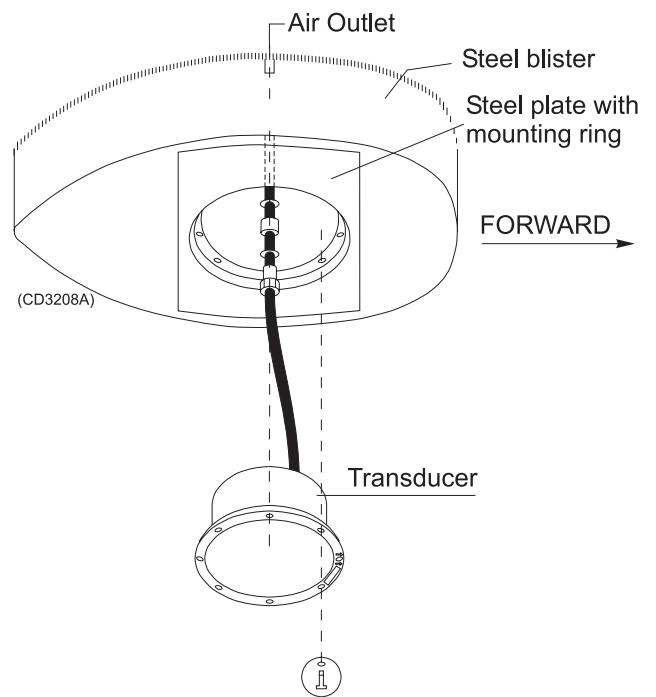


Beam pattern

Installation



Outline dimensions



Installation example

Manufacturer:

Simrad AS
 Strandpromenaden 50
 P.O.Box 111
 N-3191 Horten
 Telephone: +47 33 03 40 00
 Telefax: +47 33 04 29 87
 Internet: www.simrad.com