

# Simrad ES200-7C

## Split beam echo sounder transducer

### Introduction

The Simrad ES200-7C is a split-beam composite transducer with a large bandwidth. This provides a fine range resolution, which is important for single fish detection and target strength measurement. The transducer has four quadrants.

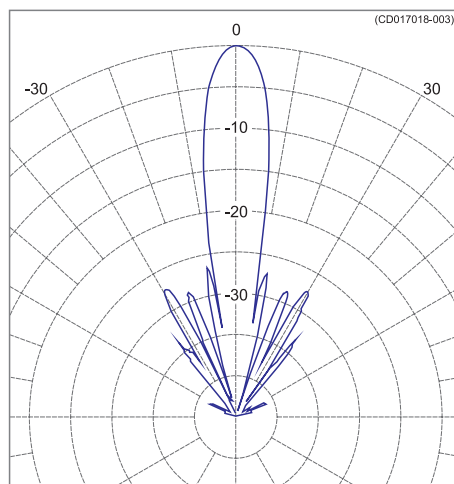
### Order number

KSV-203003

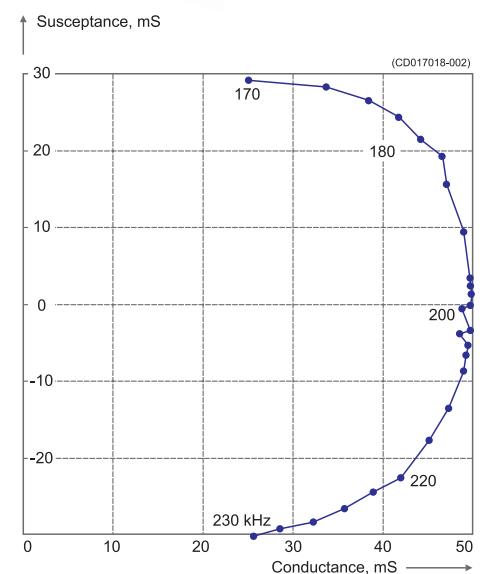
### Technical specifications

The following specifications are valid when all four quadrants are wired in parallel.

- Resonant frequency: 200 kHz
- Circular beamwidth: 7 deg
- Directivity:
  - D: 650
  - DI = 10 log D: 28 dB
- Equivalent two-way beam angle:
  - $\Psi$ : 0.009
  - 10 log  $\Psi$ : -20.5 dB
- Side lobes: Less than -23 dB
- Back radiation: Less than -40 dB
- Nominal impedance: 19 $\Omega$   
(Each quadrant: 75 $\Omega$ )
- Transmitting response: 185 dB re 1 $\mu$ Pa per V
- Receiving sensitivity, open circuit: -190 dB re 1V per  $\mu$ Pa
- Electro-acoustic efficiency: 0.75
- Max. pulse power input: 1000 W
- Max. continuous input: 10 W
- Max. transducer depth: 20 m
- Cable length: 20 m
- Cable diameter: 10.6 mm
- Weight: 1.1 kg
- Storage temperature: -20° to 70°C

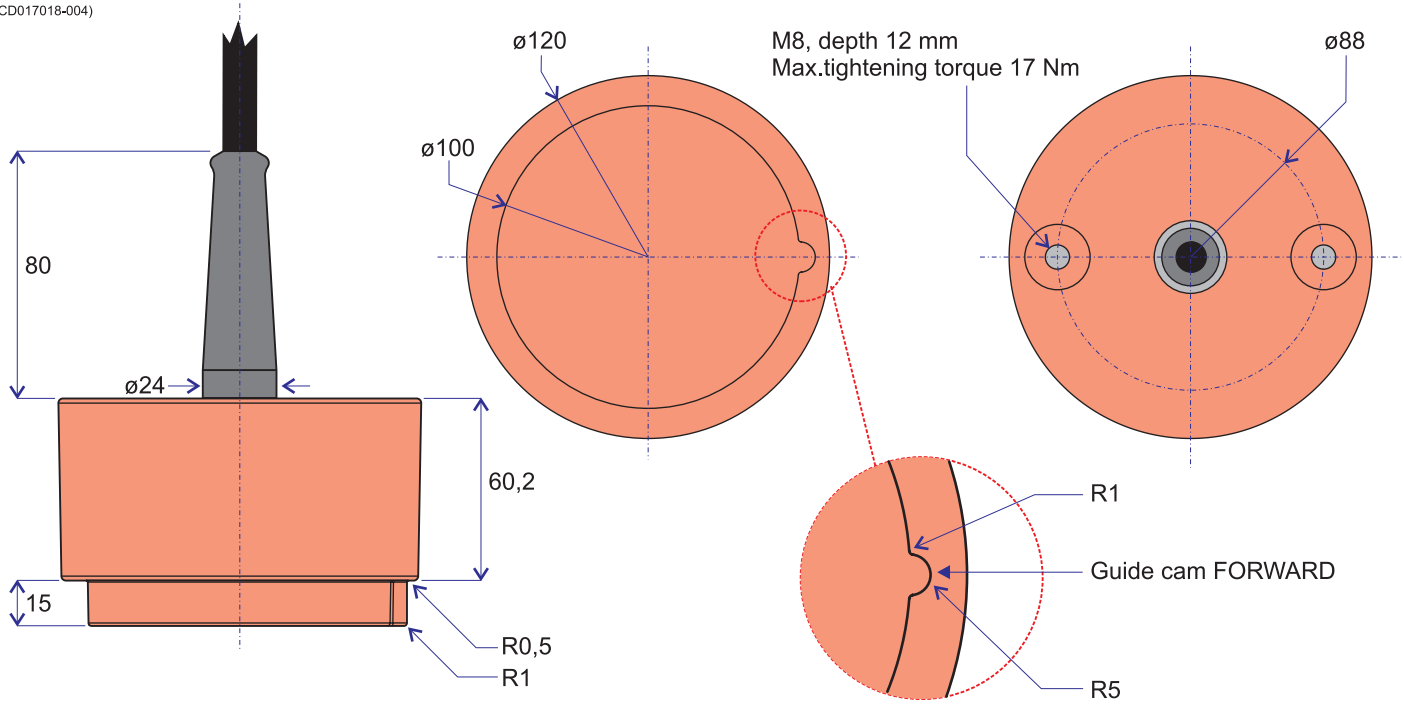


Beam pattern



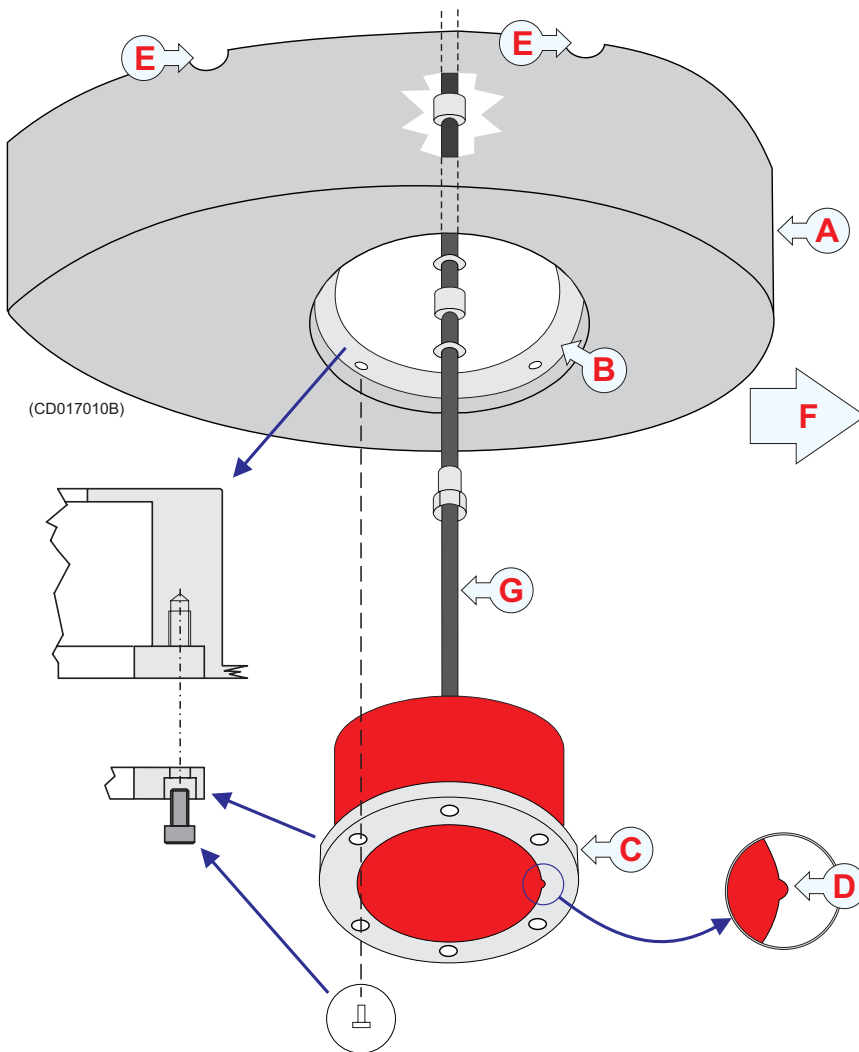
Admittance

(CD017018-004)



**Outline dimensions**

All dimensions in mm



**Installation principle**

- A Steel blister, must be manufactured by the shipyard
- B Mounting ring
- C Clamping ring
- D Guide to indicate "Forward"
- E Air outlet
- F Forward
- G Transducer cable

For more information regarding installation, refer to the *Simrad ES200-7C Installation manual*.

855-204465 / Rev.E / January 2009

**Simrad**

Kongsberg Maritime AS  
 Strandpromenaden 50  
 P.O.Box 111  
 N-3191 Horten, Norway

Telephone: +47 33 03 40 00  
 Telefax: +47 33 04 29 87  
[www.simrad.com](http://www.simrad.com)  
[simrad.sales@simrad.com](mailto:simrad.sales@simrad.com)

